



# — THE SEWANEE MOUNTAIN — MESSENGER

Volume XL No. 21

Published as a public service since 1985

Friday, June 7, 2024

## MSSA Opens 142nd Program Season June 9

The Monteagle Sunday School Assembly in Monteagle opens its 142nd consecutive summer season of enrichment with an interdenominational worship service at 11 a.m. in the Assembly's Warren Chapel. The eight-week season will continue through Sunday, Aug. 4, featuring numerous visiting lecturers who will present morning and evening programs that are open free of charge to the public; unless otherwise noted, morning lectures begin at 10:45 a.m. and evening lectures at 7:45 p.m. Anyone interested in a full schedule of the Monteagle Assembly's 2024 program is welcome to pick one up at the Assembly Office (tel. 931-924-2286), or to peruse the schedule on the Assembly's website at <www.mssa1882.org>.

Beloved performer Joe Wiegand will bring the 26th president of the United States, Teddy Roosevelt, to the Auditorium Thursday evening for "A Night with Teddy Roosevelt." Wiegand is no stranger to the Assembly, having performed in several previous seasons. As a member of the Theodore Roosevelt Association, Wiegand currently works for the Theodore Roosevelt Medora Foundation, where he regularly performs as part of the organization's musical production. Among his many accolades, Wiegand has been named a Wilkins Scholar, a Harry S. Truman Scholar, and a Thomas J. Watson Fellow. Performing as Teddy Roosevelt has taken him to all 50 states and abroad, including performances at the White House. Wiegand is a Sewanee alum (C'87).

Costume and textile historian Newbold "Newbie" Richardson will present two programs this week. On Tuesday morning, Richardson will share her lecture titled, "The History of Women's Education (1750-1850): As Seen Through Needlework Samplers." Then on Wednesday afternoon, 2:30-4:30 p.m., Richardson will discuss Quilts in the Decorative Arts in Warren Chapel, to which attendees are invited to bring their favorite quilt or sampler to share and discuss after the lecture. Richardson has been in private practice as a textile conservator and museum consultant for more than 40 years. She also works as an appraiser with the American Society of Appraisers, where she specializes in clothing, textiles, and related materials.

Local farmer Matthew Sparacio of Cove Creek Farms will lead this week's Plateau Talk and Walk on Wednesday. In his morning lecture, Sparacio will share how Cove Creek Farms engages in sustainable farming practices, such as rotating animals around the pastures to ensure they have fresh forage. Those who wish to tour Cove Creek Farms can register with the MSSA Office (max of 24 participants; no fee to join) and meet at 1 p.m. in front of the Auditorium.

Additional events the first week of the Monteagle Assembly's 2024 season include the following:

(Continued on page 5)



Elyzabeth Wilder. Photo by Courtney Smith

## An Inherited Wrecked Car and World Premiere

by Leslie Lytle, Messenger Staff Writer

What do inheriting a wrecked Rolls Royce and world premiere play have in common? Elyzabeth Gregory Wilder. Teenage Wilder made a deal with her mother: if she graduated from high school she could go to New York City. "One month shy of my 17th birthday I moved to New York," Wilder said. She'd graduated early. The visit was supposed to be just for the summer. She spent 13 years in New York and another three in Los Angeles. "I wanted to be an actor. I wasn't willing to do the work it took to be good," Wilder confessed. "But I was always willing to do the work it took to be a good writer." It paid off. Sewanee area residents may have seen Wilder around town, although she doesn't flash fame or glory, even though she's entitled to. University of the South Tennessee Williams Playwright in Residence since 2012, Wilder has written more than a dozen plays and seen them produced at both national and international venues — the Royal Court (London), Denver Center, Cleveland Play House, B Street Theatre, and Hartford Stage to name only a few. This summer, the Alabama Shakespeare Festival will host the world premiere of "Zelda in the Backyard." Zelda is the wrecked 1961 Rolls Royce the character Libby inherits from her father. Libby restores the car in a garage crammed with family artifacts and finds her way back into her life.

"Zelda in the Backyard" is the most personal thing I've ever written," Wilder concedes. The 1961 Rolls Royce she inherited disappeared for 10 years. By the time the Rolls reappeared, the car had weathered a hurricane, been wrecked, and was undrivable. She named the car after Zelda Fitzgerald, F. Scott Fitzgerald's wife, a woman Wilder describes as "a bit eccentric. She was the sort of woman who would show up at a party

late, and no one cared because she was so fabulous. I'd just graduated from college, was starting my adult life, and had a wrecked Rolls Royce in my care. Like Zelda, the Rolls was huge, larger than life."

"For years, I'd wanted to write a memoir about the Rolls' experience," Wilder said. "But I didn't know how to write a memoir. I'm a playwright." The solitary rigors of the pandemic forced her to shelve a multi-character play. "A lot of solo plays got written then," Wilder observed. "Solo plays are theater's version of memoir. One-character plays lend themselves well to the genre." Wilder workshoped the Zelda play at an Alabama Shakespeare Festival summer workshop in 2022 and that fall did a closed reading in Sewanee before an audience of 12 people. "I wanted to see if the play worked," Wilder said. "There is a lot for the audience to interact with. Theater is a collaborative art."

Wilder is technically a member of the University English department because Creative Writing falls under the English department umbrella, but she actively engages with both the English and Theater Departments. "Elyzabeth is a great outside-the-box thinker and problem solver," said Theater Department Chair Jim Crawford. "It's tremendously valuable for our students to see her working professionally as a playwright, getting her work produced. She moves easily and productively between the worlds of academia and professional theatre."

"Solo performance is one of my favorite classes to teach," Wilder said. "Students often tell their own stories. They want to talk about 'What happened to me' instead of what they did. The main character needs to be active."

Wilder's plays are a voyage of

(Continued on page 5)

## John Kilkenny Marks Final Season with Sewanee Summer Music Festival

by Beth Riner, Messenger Staff Writer

The upcoming Sewanee Summer Music Festival June 16 to July 14 marks John Kilkenny's seventh and final season as executive director.

More than 215 talented young musicians from across the world will attend this year's prestigious festival, which is one of the largest of its kind in the country. Students live on campus for four weeks and attend full-day lessons, coaching sessions, masterclasses, and rehearsals in specialized areas: instrumental, composition, and opera.

Kilkenny, who first came to the Sewanee festival in 1993 as a student percussionist himself, returned as a faculty member in 2010 before assuming its directorship in 2018 and guiding the program through the unprecedented challenges of COVID.

"I'm proud, quite frankly, of what we were able to do during COVID," Kilkenny said. "We kept making music and connecting with our audiences and with our students. We did a summer

program in 2020 that was virtual, and we also did a winter program in January of 2021 that was all online. Those are two things that a lot of programs didn't do — a lot of programs just shut down."

During his tenure as director, Kilkenny strived to increase diversity and introduce new programs.

"I think we've been able to build a more inclusive and comprehensive program than we had," Kilkenny said. "We have more students from across the country, from around the world — we have a more diverse population of students, both economically and racially. The international student population is higher."

"I'm also proud of the new programs we've been able to introduce. We have a thriving composition program now which is something we'd had for decades and had let go of for a while. And, of course, the addition of opera in 2021 is a major step forward artistically and culturally."

(Continued on page 5)

## SCCF Collaborative Grant Orientation Session and Annual Celebration of the Plateau

The South Cumberland Community Fund board has directed \$50,000 for a special grant round during 2024, the Connecting for Lasting Impact Grant. With this grant round, first introduced in 2022, the Community Fund hopes to cultivate deeper and more meaningful lasting connections among non-profit organizations on the Plateau. In issuing this call for proposals, the goal of the Community Fund's board is to foster connections between and among organizations on the Plateau to address big challenges we all face as a community.

A grant orientation session will be at 10 a.m., Saturday, June 8, at Kennerly Hall at the Parish of St. Mark and St. Paul, located at 216 University Ave., Sewanee. A representative from your organization must attend if you wish to apply. We will focus on program goals and methods for assessing your project. In addition, we will share a rubric that the grants committee will use to determine which applications best reflect the program's goals. We hope that the orientation session

will also be a place where collaborations between organizations can be formed and projects identified.

For more information about the Connecting for Lasting Impact Grant, visit <www.southcumberlandcommunityfund.org/grants-program> or email us at <director@southcumberlandcommunityfund.org>.

Directly after the orientation session on June 8, the Community Fund will host its annual Celebration of the Plateau at 11:30 a.m., also at Kennerly Hall at the Parish of St. Mark and St. Paul. We will celebrate the recipients of our spring grants cycle (listed below) and share a simple meal together. Please RSVP at <forms.gle/VVPc-sMkkxF3myujs5> or by emailing <grants@southcumberlandcommunityfund.org> so that we can have an accurate meal count.

Betty Carpenter, chair of the Community Fund's grants committee, says of the spring grants slate, "To enhance the quality of life for all living on the plateau has always been the goal of South

(Continued on page 5)

P.O. Box 296  
Sewanee, TN 37375



## Letter

### MARC THANKS

To the Editor:

MARC is overwhelmed with the generosity of the Sewanee and surrounding community. The donations you have been bringing to Taylor's Mercantile and sometimes to my home are wonderful. All of the animals in MARC's care and some belonging to families in need are so grateful. I am so proud to be part of our mountain communities full of such caring people.

Thank you,

Sue Scruggs for MARC

## Local Food Available

The South Cumberland Farmer's Market has breads, fruits, vegetables, eggs, coffee, meats and more available. Ordering takes place each week online from Friday at 9 p.m. to Monday at noon. Walk-in pickup is on Tuesdays, 4-6 p.m., at the Sewanee Community Center. To order go to <<https://openfoodnetwork.net/south-cumberland-farmer-s-market/shop>>.

The Franklin County Farmer's Market is open 7 a.m. to noon, Tuesday, Thursday and Saturday, at 803 Dinah Shore Blvd., Winchester. Locally grown vegetables, fruit, meat, eggs, plants and more is available. Follow them on Facebook <<https://www.facebook.com/FranklinCountyFarmersMarket>>.

The Tracy City Farmer's Market is open every first and third Saturday, 7 a.m. to noon, at the Old Fair Barn, Fairgrounds Street. Local fresh honey, bread flowers, produce and more is available. For vendor registration call Tracy City Hall at (931) 592-6213.

The Sewanee Gardener's Market is open 8-10 a.m. every Saturday until September at Hawkins Lane. Locally-produced fruits and vegetables, baked goods, plants and flowers will be available.

Fresh Mess Farmer's Market takes place every Thursday, from 3-6 p.m., through Oct. 3, at Harton Park, located in downtown Monteagle. This year's market has fresh produce, plants and flowers, homemade breads, jams, jellies, crafts, and more. Vendors should call or text (931) 273-0606 to sign up and receive the vendor info packet. There is no cost to participate, but vendors are expected to abide by all local, state, and federal regulations.

We're glad you're reading the Messenger.

**MONTEAGLE CLINIC NOW OPEN**

**SHULL CHIROPRACTIC CLINIC, PLLC**

**Dr. Eric Shull**  
1045 W. Main St., Suite D-3  
Monteagle, TN 37356  
(931) 924-4869  
[shullchiropractic.com](http://shullchiropractic.com)

M,W,Th: 9am-12pm & 2pm-6pm  
Tues. 3pm-5pm  
Fri. 9am-11am

## University Job Opportunities

**Exempt Positions:** Advancement Officer, University Relations; Area Coordinator, Residential Life; Assistant Dean of Admission, Admission and Financial Aid; Assistant Dean of Residential Life, Residential Life; Assistant Director, Alumni & Parent Relations, University Relations; Assistant Director, Sewanee Fund, University Relations, Sewanee Fund; Assistant Field Hockey Coach, Athletics, Field Hockey; Assistant Swimming and Diving Coach, Athletics, Swim; Assistant Volleyball Coach, Athletics; Associate University Registrar for Information Systems and Operations, Student Success; Athletic Trainer, Athletics; Content & Communications Strategist, M&C for Admission & Financial Aid, M&C; Digital Archivist, Archives and Special Collections, Library & Information Technology Services; Energy Specialist, Facilities Management; Interim Associate University Chaplain, All Saints' Chapel; Manager of FitWell Operations, Fitwell; Manager, University Child Care Center, Child Care Center.

**Non-Exempt Positions:** Campus Security Officer (Part-Time), Public Safety; Catering Team Lead, Sewanee Catering; Custodian, FM-Building Services; Design and Production Internship, Theatre and Dance, Theatre and Dance; Event Coordinator, Academic Affairs, Dean of the College's Office; Facilities Inspections & Auxiliary Operations Custodial



## THE SEWANEE MOUNTAIN MESSENGER

Published as a public service to the community since 1985, this newspaper is printed on Fridays, 47 times a year. Free of charge, copies are distributed to 100 locations, including businesses and post offices across the Plateau. This publication is made possible by the patronage of our advertisers and by contributions from the University of the South (print production) and the Sewanee Community Chest.

Kiki Beavers editor/publisher	Janet Graham publisher emerita
April Minkler office manager	Laura Willis editor/publisher emerita
Emily Ricks proofreader	Geraldine Hewitt Piccard founder, editor/publisher emerita
Leslie Lytle staff writer	
Beth Riner staff writer	

### SUBSCRIPTIONS \$75 first class

418 St. Mary's Lane, P.O. Box 296, Sewanee, TN 37375  
Phone (931) 598-9949 | <[news@sewanecommessenger.com](mailto:news@sewanecommessenger.com)>

All material in the Sewanee Mountain Messenger and on its website are copyrighted and may not be published or redistributed without written permission.

Support, FM-Building Services; Faculty Technology Coordinator, Library & Information Technology Services; First Cook, Sewanee Dining, McClurg; FitWell Desk Attendant, Fitwell; FitWell Group Exercise Instructor, Fitwell; On-Call Catering Attendant, Sewanee Dining; Painter/Plasterer, Facilities Management; Police Officer (Full-Time), Sewanee Police Department; Police Officer (Part-Time), Sewanee Police Department; Second Cook, Sewanee Dining, McClurg; Sewanee Dining Associate, Sewanee Dining, McClurg.

For more information call (931) 598-1381. Apply at <<https://jobs.sewanee.edu>>.

## SERVING WHERE CALLED

Please keep the following individuals, their families and all those who are serving our country in your thoughts and prayers:

Blaze Cassidy Barry  
Brandon Brawley  
Justin Brawley  
James Gregory Cowan  
Mark Gallagher  
Nathaniel P. Gallagher  
Peter Green  
Zachary Green  
Jackson B. Guenther  
Steven Tyler Jeffery  
Gabriel Lloyd  
Waylon Case McBee  
Bailey Jackson McLean  
Andrew Midgett  
Jose D. Ramirez III  
Troy (Nick) Sepulveda  
Zachary Sherrill  
Allison Tucker  
Nick Worley

If you know of others in our Mountain family who are serving our country, please give their names to American Legion and Auxiliary member Shirley M. Lawson at <[slawson@sewanee.edu](mailto:slawson@sewanee.edu)>.

Residential • Commercial • Painting • Interior • Exterior  
Brush • Roll • Spray • Decks • Stain • Power Washing • Rentals  
Camps • Hotels • Motels • Welcome Shutter Painting

**Paul Terry Painting**  
Locally Owned • Licensed • Insured

Paul Terry  
Owner

Free Estimates  
(615) 580-6181

We Support Breast Cancer Research

**Custom Home Remodeling Preserves the Historical Charm**

"Open your door to all the possibilities"

Custom home remodeling begins with...

**Joseph's Remodeling Solutions**  
A division of Sumpter Solutions, LLC  
Taking Quality to the Next Level  
Licensed - Insured - Green Certified  
931-598-5565  
[joseph@josephsremodelingsolutions.com](mailto:joseph@josephsremodelingsolutions.com)  
[www.josephsremodelingsolutions.com](http://www.josephsremodelingsolutions.com)

**RIVENDELL SPIRITUAL CENTER**

Let our paths help you along your journey.

Retreats, group and personal  
Healing  
Writing  
Music  
Three month sabbatical  
Workshops

(931) 598-5555  
[info@rivendellspiritualcenter.com](mailto:info@rivendellspiritualcenter.com)  
[rivendellspiritualcenter.com](http://rivendellspiritualcenter.com)

### Letters to the Editor Policy

Letters to the editor are welcome at the Sewanee Mountain Messenger and are a vital part of our community's conversation. Letters need to be no longer than 250 words and may be edited for space and clarity. We make exceptions from time to time, but these are our general guidelines.

Letters and/or their author must have some relationship to our community. We do not accept letters on national topics from individuals who live outside our print circulation area. Please include your name, address and a daytime telephone number with your letter. You may mail it to us at Sewanee Mountain Messenger, P.O. Box 296, Sewanee, TN 37375, come by our office, 418 St. Mary's Ln., or send your email to <[news@sewanecommessenger.com](mailto:news@sewanecommessenger.com)>. — KB



### MESSENGER INFORMATION

Phone: (931) 598-9949

#### Display Advertising

Deadline: Monday, 5 p.m.  
<[ads@sewanecommessenger.com](mailto:ads@sewanecommessenger.com)>

#### News and Calendar

Deadline: Tuesday, 5 p.m.  
Kiki Beavers  
<[news@sewanecommessenger.com](mailto:news@sewanecommessenger.com)>

#### Classified Advertising

Deadline: Wednesday, noon  
April Minkler  
<[classifieds@sewanecommessenger.com](mailto:classifieds@sewanecommessenger.com)>

### MESSENGER HOURS

Monday, Tuesday and Wednesday  
9 a.m. to 4 p.m.  
Thursday — Production Day  
Closed  
Friday — Circulation Day  
Closed



## Upcoming Meetings

### American Legion Meeting

American Legion Post 51 is scheduled to meet at 9 a.m., Saturday, June 8, at the Legion Hall in Sewanee.

### Town of Monteagle

The Monteagle City Council will have a workshop at 4 p.m., Monday, June 10, 2024, in the conference room at City Hall.

There will be a special called meeting of the Mayor and Alderman at 9 a.m., Wednesday, June 12, 2024, in the conference room at the Town Hall. The only agenda item will be to evaluate bids for the Sanitary Sewer Rehabilitation Project.

The Monteagle Board of Zoning Appeals meeting of the Monteagle Planning Commission is scheduled to meet at 5 p.m. CDT, Monday, June 17, 2024, in the Monteagle Town Hall. The purpose of this BZA meeting is the interpretation of convenience stores as it relates to a proposed Dollar General at 130 Dixie Lee Avenue. All interested parties are encouraged to attend.

### Franklin County School Board

The Franklin County School Board is scheduled to meet at 6 p.m., Monday, June 10, at 215 S. College St., Winchester.

### Monteagle-Sewanee Rotary Club

The Monteagle-Sewanee Rotary Club is scheduled to meet at 8 a.m., Thursday, June 13, at St. Mary's Sewanee. John Kilkenny will discuss the Sewanee Summer Music Festival.

### Franklin County Commission

The Franklin County Board of Commissioners is scheduled to meet at 7 p.m., Monday, June 17, at the Franklin County Courthouse.

### Sewanee Utility District

The Sewanee Utility District of Franklin and Marion Counties Board of Commissioners is scheduled to meet at 5 p.m., Tuesday, June 18, at the utility office on Sherwood Road. If a customer is unable to attend but wishes to bring a matter to the board, call (931) 598-5611, visit the office, or call a board member. The board members are Doug Cameron, Johnny Hughes, Donnie McBee, Charlie Smith, and Clay Yeatman.

### Get Ready for the Sewanee Fourth of July

Volunteers are needed to help with the annual Sewanee Fourth of July. The Fourth of July committee is seeking volunteers for the parade, children's games, and arts and crafts show. These events cannot be offered without community help. For more information and to volunteer, contact Dylan McClure at <jdmclclure323@gmail.com> or Tracie Sherrill at <tshlvsut@gmail.com>. The next planning meeting is scheduled for 5 p.m., Tuesday, June 18, via Zoom.

Join Zoom Meeting <https://us02web.zoom.us/j/88205604176?pwd=OVkrZExEK0o5V0N1bV BnSmNXbTlZCz09>.

Meeting ID: 882 0560 4176. Passcode: 873719

Dial by your location +1 312 626 6799 US (Chicago)

Registration is open for the arts and crafts fair, cake content, food vendors and the parade. Please go to <http://www.sewanee4thofjuly.org> to sign up.

### Sewanee Community Council

The next meeting of the Community Council is scheduled for Monday, Sept. 23, 2024, at 7 p.m.

We have reserved Monday, June 24, 2024, as a possible meeting date and will meet then if there are urgent concerns. If there are any items for discussion that cannot wait until September, please submit them to the Provost's office by noon, on Wednesday, June 12.

Please note we also have a possible meeting date held in late August and will inquire later this summer about the need to meet then.

## Cowan Flag Day Ceremony

The Town of Cowan will celebrate the history, heritage, and spirit of "Old Glory" at 5 p.m., Friday, June 14, in front of the log cabin court house. (Across the track from Cowan Railroad Museum.)

On June 14, 1777, the Second Continental Congress adopted the Flag of the United States with 13 stripes of red and blue, and a union of stars on a blue field.

The history of the flag also brings the legendary story of Betsy Ross who sewed the first version according to her family memoirs.

We hope you can join us for this special occasion!

## Small Business Ideas Workshop

The University of Tennessee Extension in Grundy County will offer a Small Business Ideas Workshop open to current small business owners, business supporters, and those individuals wishing to start a small business in Grundy County and the surrounding area. The Small Business workshop will be at 2:30 p.m., Monday, June 10, 2024. The program will take place at the old Coalmont School Cafeteria. It is a tan building located behind the main brick building at 7852 TN 56, Coalmont. This workshop will be an opportunity to learn more about the economic growth and tourism development in our county and share ideas pertaining to what businesses might be sustainable in the future.

The workshop is open to anyone. Several specialists with knowledge on small business development will be in attendance. Refreshments will be provided by the South Cumberland Chamber of Commerce. If you have any questions about this program, please contact the UT Extension Office at (931) 592-3971. The University of Tennessee Extension offers its programs to all eligible persons regardless of race, color, national origin, sex, age, disability, religion or veteran status, and is an Equal Opportunity Employer.

## MMUMC Curbside Food Distribution

Morton Memorial United Methodist Church is scheduled to have its monthly community food distribution from 8-10 a.m., Saturday, June 8. In order to maintain social distancing, drivers should enter the food distribution line from behind the church where they will be directed to the loading area. If you are unable to load your own vehicle, volunteers will be there to assist. Morton Memorial United Methodist Church is located at 322 West Main St., Monteagle.

## Swiss Celebration Seeks More Vendors, Artisans

The annual Grundy County Swiss Heritage Celebration, sponsored by the Grundy County Swiss Historical Society, will be on Saturday, July 27, from 10 a.m. to 4 p.m. (CDT) at the Stoker-Stampfli Farm Museum in Gruetli-Laager, Tenn.

The setting is the picturesque, rustic farmstead in the Colony of Gruetli settled by the Swiss in 1869. The family-friendly festival attracts more than 700 visitors each year.

Vendors will offer beverages, food, baked goods, canned goods, soaps, crafts, woodworking, mountain plants and herbs.

Jackie Lawley, society president, welcomes more food vendors and artisans to apply, including exhibitors who offer fun activities that cater to children. Contact Lawley at (931) 235-3029 or <jackie@swisshistoricalsociety.org>.

You don't have to be Swiss to participate! To learn more, visit <www.swisshistoricalsociety.org>.



# piggly wiggly

## Down Home, Down the Street

754 West Main St., Monteagle  
(931) 924-3135  
8 a.m. to 9 p.m. 7 days a week

## Event on Campus

The Advanced Degrees Program at the School of Theology seeks to strengthen connections between ministry and theological studies for ordained ministers pursuing the degree of either Doctor of Ministry or Master of Sacred Theology. This year, classes will be offered in person and online, and the students and the professors in the program will include Episcopalians, Lutherans, Presbyterians, and Baptists, and those joining us from elsewhere in the Anglican Communion. Three weeks of classes begin on June 10.

## Jump Off Fire Hall Cookout on June 15

Come and hang out with your fire fighters and your neighbors at the Jump Off Fire Hall on Saturday, June 15, at 5 p.m. Hot dogs, condiments, and beverages will be provided. Please feel free to bring a side dish or dessert to share. Everyone is welcome!



**SEWANEE REALTY, LLC**  
*Let us help you find your special place, in this special place.*  
115 University Ave., Sewanee • 931.598.9200  
www.SewaneeRealty.com • Realtors@SewaneeRealty.com

 <p>MLS 2653862 - 240 Dogwood Dr., Winchester. \$829,000</p>	 <p>LAKE FRONT - MLS 2597407 - 637 Magnolia Dr., Winchester. \$679,500</p>
 <p>MLS 2649686 - 174 Carpenter Circle, Lot 963, Sewanee. \$775,000</p>	 <p>MLS 2651433 - 566 Deepwoods Rd., Sewanee. \$675,000</p>
 <p>BLUFF - 190 Quail Ridge Rd., Belvidere. 13+ac \$489,000</p>	 <p>MLS 2599861 - 76 Wood Bluff Rd., Winchester. \$360,000</p>
 <p>MLS 2629492 - 613 Cumberland St. E. Cowan. \$235,000</p>	 <p>MLS 2617003 - 1058 Deepwoods Rd., Lot 118, Sewanee. 12+ ac. \$835,000</p>
 <p>MLS 2611563 - 225 Hollingsworth Cove, Monteagle. \$650,000</p>	 <p>MLS 2551836 - 215 Shadow Rock Rd., Monteagle. \$289,500 <b>Do you have long term rentals? Please call Patsy Truslow (931) 636-4111 or Marie Ferguson (931) 952-2468</b></p>



**Patsy Truslow**  
Owner, Principal Broker  
931.636.4111  
patsy@sewaneerealty.com



**Marie Ferguson**  
Owner, Affiliate Broker  
931.952.2468  
marie@sewaneerealty.com

**LOTS & LAND**

William B. Martin Rd. 4+ac	2420264	\$60,000
Mossy Oak Lot 35, 5.5 ac	2615726	\$63,000
148 Galloway Ln., 14.12 ac	2624351	\$299,000
0 Johnny's Way, #1, 6+ ac	2410583	\$149,000
108 Division St., PENDING	2638169	\$40,000

**BLUFF**  
Falling Cliffs Dr., SOLD

2389298 \$119,000



**Lynn Willis**  
Affiliate Broker  
865.599.4236  
lynn@sewaneerealty.com



**Beth Rudder**  
Affiliate Broker  
931.224.1935  
beth@sewaneerealty.com



**Tabitha Staples**  
Affiliate Broker  
931.581.2149  
tabitha@sewaneerealty.com





## Obituaries

### Joyce Josephine Brown Farris

Joyce Josephine Brown Farris, age 82 of Winchester, died on June 4, 2024, at Bailey Manor. She was born on Dec. 23, 1941, in Winchester, to Elbert LeRoy Brown and Bessie Christine Finchum Brown. Among her many jobs, she worked as a medical transcriptionist at Winchester Hospital, Emerald-Hodgson Hospital and the Eyecare Center in Tullahoma. She also was a Lifestyle reporter for the Herald Chronicle. She was preceded in death by her parents; brother Kenneth Brown, and great-grandchild Ellie Marie Owens.

She is survived by her husband, David L. Farris of Winchester; children, Chris L. Stephens of Shelbyville, Marhsall D. (Lisa) Owens of Winchester, and Cathy D. (Chris) Sanders of Estill Springs; siblings Leonard (Charlotte) Brown, Robert (Marylou) Brown, William (Joyce) Brown, and Linda (Terry) Mason, all of Cowan; Phillip Brown of Winchester, and Jimmy (Gwen) Brown of Estill Springs; seven grandchildren, four great-grandchildren, and many nieces and nephews.

Visitation will be from 2-4 p.m. on Saturday, June 8, 2024, at Moore-Cortner Funeral Home, followed by the Funeral Service with Chaplin Jerry Stewart officiating, and interment in Cowan Montgomery Cemetery with Craig Sanders, Stephen Sanders, Ian Sanders, Matt Stephens, Braxton Owens and Nathan Gray all serving as pallbearers. For complete obituary go to <www.moorecortner.com>.

### Nellie Sue Hawkins

Nellie Sue Hawkins of Sewanee, died on May 13, 2024 after an extended illness. Sue was born in Sewanee on Nov. 13, 1937 to the late Jack H. Hawkins, Sr. and Katherine Mooney Hawkins.

Sue graduated from Erlanger Baroness School of Nursing as a registered nurse in 1959. She spent her career at Emerald-Hodgson Hospital in Sewanee. There she cared for people from her community and beyond. She brought comfort to families, sharing in their joy and helping them in their grief. And she was always there to help new nurses learn techniques, policies, and how to handle different life situations they would experience in a small community hospital.

After her retirement, Sue continued her community service as a volunteer in many places including working with Senior Citizens, the Hospitality Shop, operating the concession stand at the Sewanee Ballpark, and as a vital member of St. James Episcopal Church in Midway. She was co-named the Sewanee Civic Association's Volunteer of the Year in 2006.

Sue had many hobbies including puzzles of all kinds and board games. She loved many sports, but her favorite to watch was the University of Tennessee's Volunteer Lady Vols basketball. Sue was an avid softball player, playing on several teams and winning tournaments. After her playing years were over she continued coaching.

Sue is survived by many nieces, nephews, great nieces, and great nephews. Besides her parents she was preceded in death by brothers Jack H. Hawkins, Jr., John R. Hawkins, Charles "Robert" Hawkins, Harold "Ed" Hawkins, James "Marshall" Hawkins, Joseph Hawkins, and her sisters Pauline McBee, Martha Ann Marshall, Marguerite Thompson, Violet "Vickie" Sholey, and Janice Williams.

A funeral service will be at 2 p.m. CDT at St. James Episcopal Church, 898 Midway Rd., Sewanee, on June 15, 2024, with the Rev. David Goodpaster presiding. A reception will be after the service in the church's parish house.

In lieu of flowers, please consider a donation to St. James Episcopal Church, P.O. Box 336, Sewanee, TN 37375.

### Priscilla J. Graham

Priscilla J. Graham, age 72 of Monteagle, died on May 29, 2024. She was born on June 21, 1951, to Howard and Mary Land. She attended Grundy County High School with the class of 1969. She was a member of Tracy City Methodist Church, where her love for cooking and serving, particularly for the youth, became her personal ministry. She cooked in many restaurants through the years, primarily at Oak Terrace and her family's restaurant, Pop's Happy Land Truck Stop. After the restaurant sold in 2005, Priscilla maintained her love for cooking with her own catering business. She was preceded in death by her parents; brother William Land, and daughter-in-law Venessa Graham.

She is survived by her husband of more than 50 years, Larry Graham; sons, Jason (Cindy) Graham, and Benjie (Amber) Graham; sisters, Angie Langford and Darlene (Charlie) Strausbaugh, five grandchildren; seven great-grandchildren; best girlfriends, Debbie Cleek and Wilma Trussler; and many other nieces, nephews, special cousins, friends and neighbors.

Funeral services were on June 1, 2024 at Tracy City Methodist Church, with Bro. Danny Coffelt, Bro. Dennis Rollins, and Bro. Claude Hoback officiating. Interment followed in Plainview Cemetery. In lieu of flowers, Priscilla asked that donations be made to Tracy City Methodist Church, youth group: P.O. Box 667, Tracy City, TN 37387. For complete obituary go to <www.cumberlandfuneralhome.net>.

### Perry R. Prince

Perry R. Prince, age 62 of Arab, Ala., and formerly of Sewanee, died on May 23, 2024, at his home. He was born on July 19, 1961, in Sewanee, to Jack Allen and Dorothy Madeline Finney Prince. He previously worked at BASF in the chemical manufacturing industry. He was preceded in death by his parents.

He is survived by his brother, Rex (Tina) Prince of Cocoa, Fla.; significant other, Rieta Driskill of Arab, Ala.; two nephews, two nieces, two great-nieces, and six great-nephews.

Visitation will be from 12:30-1 p.m. on Sunday, June 9, 2024, at Moore-Cortner Funeral Home, with a Memorial Service at 1 p.m. from the Chapel. For complete obituary go to <www.moorecortner.com>.

## Church News

### Christ Church

On June 9 at Christ Church, The Gospel lesson is one of the parables about "A great supper." In this case, found in The Gospel according to St. Luke, Chapter 16, the invited guests all give excuses as to why they cannot accept the invitation. So the host sends out his staff to bring in "the poor, and the maimed, and the halt, and the blind." The servant notes that there is still room for more guests. So the host tells his servant to search further even the "highways and hedges and compel them to come in."

The Gospel ties in closely with The Epistle from 1 John, Chapter 4. This reading reminds us that "love is of God." It states that "God is love." While the parable contains warnings about "stiffening the invitation," it is really about the love involved in the great supper.

Our service begins at 10:45 a.m. and is followed by lunch. As we move into Summer, we often

have visitors who enjoy being asked to read or take another part of the service. If you have kitchen items you are not using, this will be a good Sunday to bring them!

### Marble Plains Baptist

Marble Plains Baptist Church of Winchester will celebrate its 98th annual "Old Folks Day" on Sunday, June 9. The tradition began in 1926 as a way of recognizing and honoring the older members of the church. The church family is encouraged to dress in old-fashioned attire and a special offering will be received for the church's Cemetery Trust Fund. The historic cemetery was established in 1863 and is owned and maintained by the church. Following the service a luncheon for all members and guests will be provided. The church is located at 525 Marble Plains Road, just inside Tims Ford State Park.

### Morton Memorial UMC

This week, we will observe "Peace with Justice Sunday," a day to consider this essential ministry around our globe. Our sermon title will be "Who's Your Daddy?" with a reading from the third chapter of the Gospel of Mark.

Children are welcome at Morton! They are invited to interact with our pastor during worship. During our children's message we will be continuing an exploration of sacred stories about God's call in our lives, as they hear a story of anointing.

To learn more, accept this invitation to worship at Morton Memorial United Methodist Church. In addition to a thought provoking message, you can look forward to inspirational music. This Sunday we will be graced by the guest vocalist, Kim Parent, sharing her amazing gift of music.

If you are unable to attend and want to sample worship at Morton, the service will be live streamed at Morton's Facebook page and avail-

(Continued on page 5)

## Church Calendar

### Abundant Life Assembly of God, Cowan

10:30 a.m. Worship, Sunday

### All Saints' Chapel

10 a.m. Holy Eucharist, Sunday

### Bible Baptist Church, Monteagle

10 a.m. Worship Service, Sunday

5:30 p.m. Evening Service, Sunday

5:30 p.m. Evening Worship, Wednesday

### Calvary Baptist Church, Winchester

10 a.m. Sunday School

11 a.m. Worship Service, Sunday

4 p.m. Evening Worship, Sunday

7 p.m. Prayer Meeting, Wednesday

### Chapman Chapel Church of the Nazarene, Pelham

9:30 a.m. Sunday School, Sunday

10:45 a.m. Morning Worship, Sunday

6 p.m. Evening Worship, Sunday

7 p.m. Bible study, Wednesday

### Christ Church Monteagle

10:45 a.m. Holy Communion, Sunday

### Christ Church, Tracy City (STEM)

10 a.m. Bible Study, Sunday

11 a.m. Holy Eucharist, Sunday

### Christ the King Anglican Church, Decherd

9 a.m. Sunday Service, Sunday

6:30 p.m. Healing/prayer service

### City Light Church, Monteagle

10:45 a.m. Worship Service, Sunday

### Cowan Fellowship Church

11 a.m. Worship Service, Sunday

### Cumberland Presbyterian Church, Cowan

11 a.m. Worship, Sunday

### Cumberland Presbyterian Church, Monteagle

9:45 a.m. Sunday School, Sunday

11 a.m. Worship Service, Sunday

### Cumberland Presbyterian Church, Sewanee

9 a.m. Worship Service, Sunday

10 a.m. Sunday School, Sunday

### Decherd Presbyterian Church

11 a.m. Worship (Sunday)

### Decherd United Methodist Church

9:45 a.m. Sunday School, Sunday

10:50 a.m. Worship Service, Sunday

### Epiphany Mission, Sherwood (STEM)

10 a.m. Holy Eucharist Rite II, Sunday

### First Baptist Church, Cowan

9:15 a.m. Sunday School, Sunday

10:25 a.m. Worship, Sunday

### First Church of the Nazarene, Cowan

11 a.m. Worship Service, Sunday

### Good Shepherd Catholic Church, Decherd

5 p.m. Mass, Saturday

10:30 a.m. Mass, Sunday

12:30 p.m. Spanish Mass, Sunday

### Goshen C. P. Church, Winchester

11 a.m. Worship Service, Sunday

### Grace Fellowship Church

10:30 a.m. Sunday School/Worship Service

### Harrison Chapel Methodist Church, Midway

10 a.m. Sunday School

11 a.m. Sunday Morning Service

5 p.m. Sunday Evening Service

### Highpointe Apostolic Church, Monteagle

10 a.m. Sunday School, Sunday

11 a.m. Worship, Sunday

7 p.m. Worship, Wednesday

### Hobbs Hill Community Church, Tracy City

10 a.m. Sunday School, Sunday

11 a.m. Morning Service, Sunday

5 p.m. Evening Service, Sunday

6 p.m. Evening Service, Wednesday

### Marble Plains Baptist Church, Winchester

9:30 a.m. Sunday School, Sunday

10:30 a.m. Morning Service, Sunday

5 p.m. Evening Service, Sunday

6 p.m. Mid-week Service, Wednesday

### Midway Baptist Church

9:45 a.m. Sunday School, Sunday

10:45 a.m. Morning Service, Sunday

6 p.m. Evening Service, Sunday

6 p.m. Bible Study, Wednesday

### Midway Church of Christ

10 a.m. Bible Study, Sunday

11 a.m. Morning Service, Sunday

6 p.m. Evening Service, Sunday

### Monteagle Church of Christ

11 a.m. Morning Service, Sunday

6 p.m. Bible Study, Wednesday

### Monteagle First Baptist Church

11 a.m. Worship Service, Sunday

6 p.m. Bible Study, Wednesday

### Monteagle Seventh-day Adventist Church

10 a.m. Bible Study, Saturday

11 a.m. Worship, Saturday

7 p.m. Prayer and Study, Tuesday

### Morton Memorial United Methodist, Monteagle

service available online after noon Sunday, link is at

<<https://www.mortonmemorialumc.com>> on FB

10 a.m. Sunday School, until 10:45 a.m.

11 a.m. Worship Service, Sunday

### Mountain of God Tabernacle, Monteagle

online worship services. Call (931) 924-5339 or go to

<<https://www.tdworldministries.org>>

11 a.m. Worship Service, Sunday

6 p.m. Prayer Service, Wednesday

### New Creations Ministries, Rayburn Chapel

4 p.m. Prayer Meeting, Sunday

### New Hope Church of God in Christ, Cowan

11 a.m. Sunday Service, Sunday

6 p.m. Sunday Service, Sunday

### Pelham United Methodist Church

9:45 a.m. Sunday School, Sunday

11 a.m. Worship Service, Sunday

### St. Agnes' Episcopal Church, Cowan

11 a.m. Holy Eucharist, Sunday

### St. James-Midway Episcopal Church

9 a.m. Holy Eucharist Rite II, (and Facebook

livestream), Sunday

### St. Margaret Mary Catholic Church, Alto

8 a.m. Mass, Sunday

### St. Mark & St. Paul

8:30 a.m. Nursery, basement of Kennerly Hall

(Sewanee Children's Center), Sunday

8:30 a.m. Holy Eucharist, Sunday

10 a.m. Holy Eucharist, Sunday, livestream

Facebook

### St. Mary's Sewanee Retreat Center

3:45 p.m. Centering Support Group, Thursday

### Sewanee Church of God

10 a.m. Worship Service, Sunday

### Sisters of St. Mary Convent Chapel

7 a.m. Morning Prayer, Tuesday-Friday

7:30 a.m. Morning Prayer, Saturday

8 a.m. Holy Eucharist, Sunday

### Tracy City First Baptist Church

10:45 a.m. Morning Worship, Sunday

### Trinity Episcopal Church, Winchester (STEM)

10:30 a.m. Holy Eucharist, Sunday

12:30 p.m. Lectionary Bible Study, Tuesday

### Unitarian Universalist Church, Tullahoma

10 a.m. Service, Sunday

6 p.m. Tullahoma Sangha, Wednesday

### Valley Home Community Church, Pelham

10 a.m. Sunday School

11 a.m. Morning Service, Sunday



**MSSA** (continued from page 1)

Monday, June 10, 6 p.m., Chapel Porch — Dinner on the Chapel Grounds, followed by Twilight Prayers and music by the W. Crimm Singers performing “Black Hymondy.” Bring a side dish to share and get to know others at the Assembly.

Tuesday, June 11, 2:30 p.m., Pulliam Center — Adult Make-and-Take Workshop: Yarn Wall Art, taught by Virginia Curry. Advance registration required; \$5 fee.

Thursday, June 13, 10:45 a.m., Warren Chapel — Gail Pitt lectures on “Finding the God in All Things.”

Thursday, June 13, 2 p.m., Pulliam Center — Deborah Denson offers “The Power of Putting Pen to Paper: An introduction to journaling” workshop. Advance registration required; no fee.

Friday, June 14, 10:45 am, Warren Chapel — Tina Adams lectures on “What is Quiet Luxury 2.0?”

Friday, June 14, 2:30 p.m., Writers’ Grove — Mary Liza Hartong reads from her book, “Love and Hot Chicken”; book signing will follow reading, with hot chicken slider tasting.

**SSMF** (continued from page 1)

While Kilkenny’s new position as executive director of the New York Youth Symphony is what he describes as a once-in-a-lifetime opportunity, he admits it was a difficult decision to leave Sewanee.

“Believe me when I say I thought about it because I knew what I would be giving up,” he said. “For what I do in the arts — as a performer as an artistic leader as an executive, there’s no better place to do it than New York City. This particular job allows me to synthesize all of the different things that I am most passionate about in the arts. I’m still working with young people; we’re still cultivating the next generation of young musicians. We have programs in jazz and musical theatre and composition and conducting and orchestra, so I’m working with a whole range of musicians here.”

For Kilkenny, the hardest thing about leaving the Mountain is the people.

“I think the faculty—the community support that we have is so incredible,” he said. “I have really gotten close to a number of people in Sewanee and alumni—it’s the people and the relationships we’ve been able to foster there.”

As the SSMF seeks to fill his shoes, Kilkenny has his own hopes for the future of the program he

helped to build these past seven years.

“I want to see the festival stick to its core values of artistic excellence and access — I want to see young people continue to thrive the way that I did as a student and the way that so many others have by coming to Sewanee,” he said. “I want to see the University and the community continue to embrace the festival and for it to grow and continue to be a vital part of what makes the Mountain and the community so great and special.”

This season, students will present 35 concerts. Guest conductors include returning favorites JoAnn Falletta and Dr. Christopher Cicconi and newcomers Chelsea Gallo and Jonathan Rush.

A \$150 season pass for the festival includes admission to all 15 ticketed concerts including Faculty Artist Series, Cumberland Orchestra, Sewanee Symphony, Opera Scenes, Jacqueline Avent Concerto Competition, Student Chamber Ensembles, Composer Showcases, Aria Showcases, Festival Brass, Concerto Lab Orchestra, July 4 Patriotic Band Celebration, and Opera’s Greatest Hits at Angel Park.

For more information, see the festival’s website at <<https://ssmf.sewanee.edu/experience/>>.

**World Premiere** (continued from page 1)

discovery for her and the audience alike. “Legacy is a common theme in my work, what we leave behind,” she acknowledged. “I never thought of my dad as someone who accomplished much. What he left behind were these stories. In writing the play I discovered why he lived life the way he did, who he wanted to be, and why he couldn’t be that person.” *Zelda in the Backyard* is a journey into the land of an uneasy universal truth.

This fall, Wilder will test-drive the play shelved during the pandemic, a portrayal of supreme court justices conducting a mock trial confronting women’s rights and abuse of power. But don’t wait until then to take a drive with Elyzabeth Wilder. “*Zelda in the Backyard*” opens June 13. For tickets visit <<https://asf.net/zelda-in-the-backyard/>>. “Each of my plays takes me out of my comfort zone in a different way,” Wilder said. “I write trying to make sense of the world around me.” Join Wilder and *Zelda* for an interactive journey of the mind.

**SoL Grammer Fellow Reading June 12**

The Sewanee School of Letters is proud to announce that our 2024 John Grammer Fellow will be Tracy O’Neill. The award, made possible by a gift from the Blake & Bailey Family Fund, brings a noted writer or scholar to Sewanee for an extended visit each summer during the School of Letters’ academic term. The John Grammer Fellow is named in honor of founding School of Letters Director John Grammer and their reading is a part of the Summer Reading and Lecture Series.

Tracy O’Neill will read in the Naylor Auditorium of Gailor Hall on Wednesday, June 12, at 4:30 p.m. A reception will follow in the Atrium. All are invited.

Tracy O’Neill is the author of the novels “The Hopeful” (Ig Publishing, 2015), and “Quotients” (Soho Press, 2020), a “stunning, and deeply disquieting, literary techno-thriller” (Lithub) infused with “the obsessive questing of early DeLillo” (Commonweal). “O’Neill’s sentences are expertly crafted marvels of economy. Her prose almost feels redacted, as if someone has cut out just the right bits to keep you guessing and thinking and feeling,” says Charles Yu. Her memoir, “Woman of Interest” (HarperOne, 2024) is “a compulsively readable, genre-bending story of finding her missing birth mother and, along the way, learning the priceless power of self-knowledge.” O’Neill was a National Book Foundation 5 Under 35 Honoree and a Center For Fiction Emerging Writers Fellow; she holds an MFA from City College and a PhD in media studies from Columbia University. The

former editor-in-chief of Epiphany journal, her writing has appeared in *Granta*, the *New York Times*, *Rolling Stone*, *The Atlantic*, *The New Yorker*, *Bookforum*, and other publications. She is an assistant professor at Vassar College.

SSL Director Justin Taylor adds, “I was impressed by Tracy O’Neill’s writing and editorial eye long before I ever met her, but over the last decade or so I’ve been proud to call her a colleague and a friend. We are extremely lucky that she is making time for us so close to the publication date of her first book of nonfiction. As you can see from her bio, she’s a writer and thinker with wide-ranging interests and multiple areas of expertise — she’s also really fun to hang out with. That isn’t the main reason I invited her, but it certainly didn’t hurt.”

**Church** (from page 4)

able there in the week following the service.

Morton has many active ministries. This Saturday, from 8–10 a.m., our Food Ministry team will be offering substantial food baskets to approximately 250 families. To receive food, drivers should enter the food distribution line, which begins behind the church. Volunteers are also welcome, should arrive before 7:45 a.m. and are asked to park in the CVS lot next door.

**St. Mark and St. Paul**

Holy Eucharist services will be at 8:30 a.m. and 10 a.m. in the church. The 10 a.m. service will be livestreamed on our Facebook page and remains available there afterward.

Nursery services: Infants and toddlers through three years old are invited to gather downstairs in Claiborne Hall.

**Sewanee Cumberland Presbyterian**

Sewanee Cumberland Presbyterian Church would like to invite all interested persons to their Wednesday morning Bible study at 10 a.m. Located in the church fellowship hall in the basement. The church is located on Bob Stewman Road. We are currently studying the book of Revelations.

*We’re glad you’re reading the Messenger.*

**SCCF** (continued from page 1)

Cumberland Community Fund. The organizations receiving grants have shown a dedication to using the funds in ways that will make a difference. I don’t know of any other place where so many people work so hard to make things better for everyone.”

For more information about the Community Fund’s work, visit us at <[southcumberlandcommunityfund.org](http://southcumberlandcommunityfund.org)>

South Cumberland Community Fund 2024 Spring Grant Slate:

Folks at Home to renovate the front entryway of the Folks at Home building for handicapped accessibility

Grundy County Food Bank for equipment racks and a commercial freezer

Grundy County Historical Society for expansion of the Grundy County Historical Society Heritage Center Outdoor Exhibit Area

Grundy County Mayor’s Office for handicapped accessible playground equipment at the Miracle on the Mountain Park

Housing Hub to establish a centralized office space for training and resources in support of safe, healthy, affordable housing

Housing Hub for infrastructure costs for Sherwood Spring Cul-de-Sac 2 in preparation for construction of home number four

Sewanee Community Chest to install a handicapped restroom and a new water heater for the

MGT Welcome and Heritage Center

Sewanee Mountain Grotto to purchase a trailer and trailer modifications for recycling efforts at the Caverns

St. James Midway Community Park to install electrical outlets and security lights at the park

Town of Tracy City to repair and refurbish the “Old Fair Barn”

Tracy City Elementary School for an addition to the walking and running track at Tracy City Elementary School

Tracy City Volunteer Fire Department for partial funding of an AMKUS ION ITR 500 RAM extraction tool

**Keep the Mountain Beautiful.**



**PLEASE DON'T LITTER.**

**Need More Room?**

**Sewanee Mountain Storage**

(931) 598-5682

Evan Barry

Hwy 41 - Between Sewanee & Monteagle

Video Monitoring 5x10 | 10x10 | 10x20 Security Camera

Temperature Controlled Units 5x5 | 5x10 | 10x10 | 10x15 | 10x20

Temperature and Humidity Regulated

**FOR LEASE**

**\$2175/month**

163 12th STREET TRACY CITY TN

Commercial or Residential 3 Bedroom/3 Bath 2650 square feet

CALL (615) 596-0781

See more photos on Zillow

**Compassionate Home Care & Community Services LLC.**

*"Providing Care From The Heart"*

We are accepting new clients and applications for CNA/Caregivers

**1045 WEST MAIN STREET MONTEAGLE**

We accept LTC, VA, SETAAAD, TNCARE CHOICES, ECF CHOICES and Private Pay

**931-327-5276 (office)**

**Ann R. McNair, CPA**

TAX & ACCOUNTING SERVICES

(615) 268-1040

annmcnaircpa@gmail.com

*You earned the money. I'll help you keep it.*

**CMAA** COUNTRY MUSIC ASSOCIATION

Registered QuickBooks ProAdvisor & Member of American Institute of Certified Public Accountants



# SEWANEE SUMMER MUSIC FESTIVAL 2024

WEEK 1	WEEK 2	WEEK 3	WEEK 4
<p>— JUNE —</p> <p><b>16</b> 3:30 pm • \$ Faculty Artist Series Opening Concert Guerry Auditorium</p> <p><b>21</b> 7:30 pm • \$ Cumberland Orchestra Guerry Auditorium</p> <p><b>22</b> 1:30 pm • Free Student Chamber Music Guerry Auditorium St. Luke's Chapel</p> <p>4 pm • Free Composer Showcase Art Gallery</p> <p>7:30 pm • \$ Faculty Artist Series Guerry Auditorium</p> <p><b>23</b> 3:30 pm • \$ Sewanee Symphony Guerry Auditorium</p>	<p><b>25</b> 7 pm • Free SSMF Chamber Music Cowan Arts Center</p> <p>7:45 pm • Free SSMF Chamber Music Monteagle Sunday School Assembly</p> <p><b>28</b> 7:30 pm • \$ Cumberland Orchestra Guerry Auditorium</p> <p><b>29</b> 1:30 pm • Free Student Chamber Music Guerry Auditorium St. Luke's Chapel Art Gallery</p> <p>7:30 pm • \$ Faculty Artist Series Guerry Auditorium</p> <p><b>30</b> 3:30 pm • \$ Sewanee Symphony Guerry Auditorium</p>	<p>— JULY —</p> <p><b>2</b> 4 pm • Free Aria Showcase St. Luke's Chapel</p> <p><b>4</b> 7:30 am • Free Flag Raising Ceremony Abbo's Alley</p> <p>7 pm • Free Patriotic Celebration Guerry Auditorium</p> <p>7:45 pm • Free Brass Quintet Monteagle Sunday School Assembly</p> <p><b>5</b> 7:30 pm • \$ Cumberland Orchestra Guerry Auditorium</p> <p><b>6</b> 1:30 pm • Free Concerto Lab Final Guerry Auditorium</p> <p>5 pm • Free Opera's Greatest Hits Angel Park</p> <p>7:30 pm • \$ Faculty Artist Series Guerry Auditorium</p> <p><b>7</b> 3:30 pm • \$ Sewanee Symphony Guerry Auditorium</p>	<p><b>9</b> 4 pm • Free Aria Showcase St. Luke's Chapel</p> <p>7:45 pm • Free SSMF Chamber Music Monteagle Sunday School Assembly</p> <p><b>10</b> 7:30 pm • \$ Opera Scenes Guerry Auditorium</p> <p><b>11</b> 4 pm • Free Aria Showcase St. Luke's Chapel</p> <p>7:30 pm • \$ Jacqueline Avent Concerto Competition Guerry Auditorium</p> <p><b>13</b> 1:30 pm • Free Student Chamber Music Guerry Auditorium Art Gallery St. Luke's Chapel</p> <p>4 pm • Free Composers Showcase Art Gallery</p> <p>7:30 pm • \$ Faculty Artist Series Guerry Auditorium</p> <p>10:05 pm • Free Festival Brass All Saints' Chapel</p> <p><b>14</b> 2:30 pm • \$ Cumberland Orchestra Guerry Auditorium</p> <p>3:30 pm • \$ Sewanee Symphony Guerry Auditorium</p>

  
**Full Event Calendar  
& Program Repertoire:**  
[ssmf.sewanee.edu/events](http://ssmf.sewanee.edu/events)

## TICKETS

\$25 All Events

\$150 Season Subscription

University Students, Faculty, & Staff receive FREE tickets!

Buy tickets online at [ssmf.sewanee.edu/tickets](http://ssmf.sewanee.edu/tickets)





## Two Special Events with Potter and McCardell this Weekend

The Sewanee community is invited to participate in two special offerings taking place this Saturday, June 8. At 9 a.m., please join Professor Emeritus, Bran Potter, for a morning hike to Piney Point. Meet in the gravel parking lot by the University gates on 41A. The hike should last 1-1.5 hours.

At 11 a.m. Vice-Chancellor Emeritus John McCardell, Jr., will give a special lecture titled "Whoever Wants to Know the Heart and Mind of America Had Better Learn Baseball." This lecture will take place in Convocation Hall located on the corner of University and Georgia Avenue. Arrive early for coffee and a light breakfast spread.

## SENIOR CENTER NEWS

The Sewanee Senior Center serves lunch at noon Monday through Friday. The suggested donation is \$4, regardless of your age. Please call 598-0771 by 9 a.m. to order lunch. Menus follow:

**Monday, June 10:** Baked chicken, hashbrown casserole, broccoli salad, rolls.

**Tuesday, June 11:** Philly steak sandwich, French fries.

**Wednesday, June 12:** Pork roast, red potatoes, green beans, rolls.

**Thursday, June 13:** Sweet and sour chicken, rice, rolls.

**Friday, June 14:** Shepherd's pie, salad, rolls.

Menus may vary. For information call the center at 598-0771.

Chair exercise with Ruth Wendling is from 10:30-11:45 a.m. on Mondays and Wednesdays.

The Sewanee Senior Center does not charge any membership fee. All persons 50 or older who take part in any of the activities are considered members.

## The Second Ever Farm Olympics

Southeast Tennessee Young Farmers will host the Farm Olympics at 2 p.m., Saturday, June 8, at Cove Creek Farm in Monteagle.

Southeast Tennessee Young Farmers works to support young and aspiring farmers through community-building, resource and knowledge sharing, and advocacy. While much of that work centers on building farmer networks and collaborations, we recognize that for many that leaves a deep competitiveness buried within. We must release it! That is why we are thrilled to host the second ever Farm Olympics where farmers and non-farmers (maybe you?) will compete for the Farm Olympics Cup, spread awareness about the serious challenges that young farmers face, and raise money to help our chapter address those issues.

This year's events include the Kubota of Chattanooga Transplant Race, the South Cumberland Regional Land Trust Rock, Paper, Scissors Tournament; The American Farmland Trust Obstacles to Land Access Race; The Sequatchie Cove Farm Multigenerational Egg Toss; The Land Trust for Tennessee Plant Identification Quiz; the Shifted Strong Hay Bale Toss; the Cove Creek Classic Fence Race; the Cumberland Forest School Kids Water Trough Relay, as well as the Grace Frank Group Egg Juggle, and the Lupi's Pizza Pies Pie Judging event.

Competitive events will be followed by a farm to picnic blanket feast featuring Cove Creek pork and side dishes from Mac's Kitchen and Bar, and LUNCH as well as other local farms. After dinner there will be a silent auction with products from our farmers and supporters; and the Hungry for Community Hoe Down — a contra dance featuring fiddlin' Bob Townsend and his band.

Tickets are \$30 for adults and \$15 for children, (discounts are available for members via email <setnyf@gmail.com>), available at <https://southeasttennesseeyoungfarmers.com/events>.

Made possible with generous support from American Farmland Trust, Kent Ballow, Cove Creek Farm, Grace Frank Group, Hungry for Community (a project of the Grundy County Arts Council), Kubota of Chattanooga, Lupi's Pizza Pies, Patagonia Nashville, Sequatchie Cove Farm, Shifted, The Land Trust for Tennessee, The South Cumberland Regional Land Trust and Jumpoff Community Land Trust, Cumberland Forest School, Furnish Me Vintage, Mac's Kitchen and Bar, Niedlov's Bakery and Cafe, Stewards Unlimited, Alter Eco Farms, Art of Wellness, Bread and Butter, Calliope Restaurant, Cumberland Folk School, Lodge Cast Iron, LUNCH, Rooted Here / the South Cumberland Farmers Market, Sequatchie Cove Creamery, Spice Trail, Summer Fields, The Marugg Company, Yip Fitness, Growing Roots, and Yoga with Helen.

### SHARE YOUR NEWS.

Help friends get information. Help local businesses succeed. Help our Mountain communities. <news@sewaneemessenger.com>

## Hannah Matis to Lecture June 12

Dr. Hannah Matis, associate professor of Church History at the School of Theology, will lecture at 7 p.m., Wednesday, June 12, in Convocation Hall (760 University Ave.) located on the campus of the University of the South. In her lecture titled "Daring the Wilderness: The Preaching and Theology of the Beguines," Matis will illuminate the religious lives of this diverse group of lay religious women who lived in the high and late Middle Ages. Beguines included some of the most innovative and radical vernacular theologians of their day and influenced other theologians and forms of religious life on the eve of the Reformation.

Matis's lecture explores the beguines movement in general and the theology of one thirteenth-century Dutch beguine, the poet Hadewijch, in particular. Hadewijch's favorite themes include the all-encompassing love of Christ, the longing of the soul for the beloved, and a profound exploration of human suffering. The proclamation and witness of Hadewijch make her a challenging and inspirational figure in the church nearly eight hundred years later.

The lecture is free and open to the public and all are encouraged to attend. For more information visit: <https://theology.sewaneec.edu/events/>.

## Outside Inn Performances

The community is invited to Lower Cravens Hall at 435 Kentucky Avenue Friday and Saturday nights, June 7 and June 8, for a reunion of folks who conversed, played, sang, performed at, or supported the Outside Inn coffeehouse in the 1970s-80s. Community admission \$5 at the door, which opens for performances and music jamming from 7-9:30 p.m. both nights.

## SEWANEE AUTO REPAIR

### Complete Auto & Truck Repair

Tune-ups • Tires • Tire Repair • Brakes • Steering  
• Oil Changes • Batteries • Computer Diagnostics



All Makes & Models • Service Calls •  
Quality Parts

ASE Master Certified Auto Technician •  
35 Years' Experience

Open 9 to 5 M-F  
(931) 598-5743 • 76 University Ave.

The Sewanee School of Letters presents a reading with our 2024 John Grammer Fellow



# Tracy O'Neill

4:30 p.m. on  
Wednesday, June 12  
Naylor Auditorium

Reception following in Gailor Atrium.  
For more information visit [letters.sewaneec.edu](http://letters.sewaneec.edu)

**Mooney's**  
Market & Emporium

- ✦ ORGANIC, LOCAL FOODS
- ✦ SUPPLEMENTS & TOILETRIES
- ✦ GARDEN & BIRD SUPPLIES
- ✦ YARN & ACCESSORIES
- ✦ ANTIQUES, JEWELRY, GIFTS
- ✦ CALL FOR CURB SERVICE

Store open 10-6 daily  
931-924-7400  
1265 W Main • Monteagle



# Sewanee Utility District of Franklin and Marion Counties Water Quality Report 2023



## Is my drinking water safe?

Yes, our water meets all of EPA's health standards. We have conducted numerous tests for over 80 contaminants that may be in drinking water. As you'll see in the chart, we only detected 11 of these contaminants. We found all of these contaminants at safe levels.

## What is the source of my water?

Your water, which is surface water, comes from Lakes O'Donnell and Jackson. Our goal is to protect our water from contaminants and we are working with the State to determine the vulnerability of our water source to potential contamination. The Tennessee Department of Environment and Conservation (TDEC) has prepared a Source Water Assessment Program (SWAP) Report for the untreated water sources serving this water system. The SWAP Report assesses the susceptibility of untreated water sources to potential contamination. To ensure safe drinking water, all public water systems treat and routinely test their water. Water sources have been rated as reasonably susceptible, moderately susceptible or slightly susceptible based on geologic factors and human activities in the vicinity of the water source. The Sewanee Utility District of Franklin and Marion Counties (SUD) sources rated as slightly susceptible to potential contamination.

An explanation of Tennessee's Source Water Assessment Program, the Source Water Assessment summaries, susceptibility scorings and the overall TDEC report to EPA can be viewed online at <https://www.tn.gov/environment/program-areas/wr-water-resources/water-quality/source-water-assessment.html> or you may contact the Water System to obtain copies of specific assessments.

## Why are there contaminants in my water?

Drinking water, including bottled water, may reasonably be expected to contain at least small amounts of some contaminants. Community water systems are required to disclose the detection of contaminants; however, bottled water companies are not required to comply with this regulation. The presence of contaminants does not necessarily indicate that water poses a health risk. More information about contaminants and potential health effects can be obtained by calling the Environmental Protection Agency's Safe Drinking Water Hotline (800-426-4791).

For more information about your drinking water, please call Water Superintendent James Smartt at 931- 598-5201. Este informe contiene información muy importante. Tradúscalo o hable con alguien que lo entienda bien.

## How can I get involved?

Our Board of Commissioners meets on the Third Tuesday of every month at 5:00 PM at the Utility Office. Please feel free to participate in these meetings. The SUD Board is elected and consists of five members. Each member serves a four year term. Decisions by the Board on customer complaints brought before the Board under the District's complaint policy may be reviewed by the Utility Management Review Board of the Tennessee Department of Environment of Conservation pursuant to Section 7-82-703 (7) of Tennessee Code Annotated. You can also visit our website [www.sewaneeutility.org](http://www.sewaneeutility.org) for more information

## Is our water system meeting other rules that govern our operations?

The State and EPA require us to test and report on our water on a regular basis to ensure its safety. We have met all of these requirements. Results of unregulated contaminant analysis are available upon request. We want you to know that we pay attention to all the rules.

## Other Information

The sources of drinking water (both tap water and bottled water) include rivers, lakes, streams, ponds, reservoirs, springs, and wells. As water travels over the surface of the land or through the ground, it dissolves naturally-occurring minerals and, in some cases, radioactive material, and can pick up substances resulting from the presence of animals or from human activity.

Contaminants that may be present in source water:

- Microbial contaminants, such as viruses and bacteria, which may come from sewage treatment plants, septic systems, agricultural livestock operations, and wildlife.
- Inorganic contaminants, such as salts and metals, which can be naturally-occurring or result from urban stormwater runoff, industrial, or domestic wastewater discharges, oil and gas production, mining, or farming.
- Pesticides and herbicides, which may come from a variety of sources such as agriculture, urban stormwater runoff, and residential uses.
- Organic chemical contaminants, including synthetic and volatile organic chemicals, which are by-products of industrial processes and petroleum production, and can also come from gas stations, urban stormwater runoff, and septic systems.
- Radioactive contaminants, which can be naturally-occurring or be the result of oil and gas production and mining activities.

In order to ensure that tap water is safe to drink, EPA and the Tennessee Department of Environment and Conservation prescribe regulations which limit the amount of certain contaminants in water provided by public water systems. SUD's water treatment processes are designed to reduce any such substances to levels well below any health concern. FDA regulations establish limits for contaminants in bottled water which must provide the same protection for public health.

Due to all water containing dissolved contaminants, occasionally your water may exhibit slight discoloration. We strive to maintain the standards to prevent this. We at SUD work around the clock to provide top quality water to every tap. We ask that all our customers help us protect our water sources, which are the heart of our community, our way of life and our children's future.

## Do I Need To Take Special Precautions?

Some people may be more vulnerable to contaminants in drinking water than the general population. Immuno-compromised persons such as persons with cancer undergoing chemotherapy, persons who have under-gone organ transplants, people with HIV/AIDS or other immune system disorders, some elderly, and infants can be particularly at risk from infections. These people should seek advice about not only their drinking water, but food preparation, personal hygiene, and precautions in handling infants and pets from their health care providers. EPA/CDC guidelines on appropriate means to lessen the risk of infection by Cryptosporidium and other microbiological contaminants are available from the Safe Drinking Water Hotline (800-426-4791).

## Lead in Drinking Water

If present, elevated levels of lead can cause serious health problems, especially for pregnant women and young children. Lead in drinking water is primarily from materials and components associated with service lines and home plumbing. The Sewanee

Utility District is responsible for providing high quality drinking water, but cannot control the variety of materials used in

plumbing components. When your water has been sitting for several hours, you can minimize the potential for lead exposure by flushing your tap for 30 seconds to 2 minutes before using water for drinking or cooking. If you are concerned about lead in your water, you may wish to have your water tested. Information on lead in drinking water, testing methods, and steps you can take to minimize exposure is available from the Safe Drinking Water Hotline or at <http://www.epa.gov/safewater/lead>

## Water System Security

Following the events of September 2001, we realize that our customers are concerned about the security of their drinking water. We urge the public to report any suspicious activities at any utility facilities, including treatment plants, pumping stations, tanks, fire hydrants, etc. to 931- 598-5611

## Water Quality Data

What does this chart mean?

- **MCLG** - Maximum Contaminant Level Goal, or the level of a contaminant in drinking water below which there is no known or expected risk to health. MCLGs allow for a margin of safety.
- **MCL** - Maximum Contaminant Level, or the highest level of a contaminant that is allowed in drinking water. MCLs are set as close to the MCLGs as feasible using the best available treatment technology. To understand the possible health effects described for many regulated constituents, a person would have to drink 2 liters of water every day at the MCL level for a lifetime to have a one-in-a-million chance of having the described health effect.
- **MRDL**: Maximum Residual Disinfectant Level or MRDL: The highest level of a disinfectant allowed in drinking water. There is convincing evidence that addition of a disinfectant is necessary for the control of microbial contaminants.
- **MRDLG**: Maximum residual disinfectant level goal. The level of a drinking water disinfectant below which there is no known or expected risk to health. MRDLGs do not reflect the benefits of the use of disinfectants to control microbial contaminants.
- **Below Detection Level (BDL)** - laboratory analysis indicates that the contaminant is not present at a level that can be detected.
- **AL** - Action Level, or the concentration of a contaminant which, when exceeded, triggers treatment or other requirements which a water system must follow.
- **Parts per million (ppm) or Milligrams per liter (mg/l)** – explained as a relation to time and money as one part per million corresponds to one minute in two years or a single penny in \$10,000.
- **Parts per billion (ppb) or Micrograms per liter** - explained as a relation to time and money as one part per billion corresponds to one minute in 2,000 years, or a single penny in \$10,000,000.
- **Nephelometric Turbidity Unit (NTU)** - nephelometric turbidity unit is a measure of the clarity of water. Turbidity in excess of 5 NTU is just noticeable to the average person.
- **TT** - Treatment Technique, or a required process intended to reduce the level of a contaminant in drinking water.

Contaminant	Violation Yes/No	Level Detected	Range of Detections	Date of Sample	Unit Measurement	MCLG	MCL	Likely Source of Contamination
Total Coliform Bacteria	NO	0		2023		0	<2 positive samples	Naturally present in the environment
Turbidity <sup>1</sup>	NO	0.04	0.03-0.09	2023	NTU	n/a	TT	Soil runoff
Chlorine	NO	1.7	.90-2.0	2023	ppm	4	4	Water additive used to control microbes.
Copper	NO	90% = 0.53ppm	0.000-0.747	2021	ppm	1.3	AL=1.3	Corrosion of household plumbing systems; erosion of natural deposits; leaching from wood preservatives
Lead <sup>2</sup>	NO	90% = 5.44ppb	0.000-11.4	2021	ppb	0	AL=15	Corrosion of household plumbing systems; erosion of natural deposits
Nitrate (as Nitrogen) <sup>3</sup>	NO	BDL	BDL	2023	ppm	10	10	Runoff from fertilizer use; leaching from septic tanks; sewage; erosion of natural deposits
Sodium	NO	10.7	10.7	2023	ppm	N/A	N/A	Erosion of natural deposits; used in water treatment
TTHM <sup>4</sup> [Total trihalomethanes]	NO	45	29-67	2023	ppb	n/a	80	By-product of drinking water chlorination
Halooxetic Acids (HAA5)	NO	27	17-38	2023	ppb	N/A	60	By-product of drinking water disinfection
Total Organic Carbon <sup>5</sup>	NO	1.13	1.00-1.23	2023	ppm	TT	TT	Naturally present in the environment

During the most recent round of Lead and Copper testing, 1 of 20 households sampled for lead and 0 of 20 households sampled for copper contained concentrations exceeding the action level.

<sup>1</sup>100% of our samples were below the turbidity limit.

<sup>2</sup>Infants and young children are typically more vulnerable to lead in drinking water than the general population. It is possible that lead levels at your home may be higher than at other homes in the community as a result of materials used in your home's plumbing. If you are concerned about elevated lead levels in your home's water, you may wish to have your water tested and flush your tap for <sup>3</sup>0 seconds to 2 minutes before using tap water. Additional information is available from the Safe Drinking Water Hotline (1-800-426-4791).

<sup>3</sup>Nitrate in drinking water at levels above 10 ppm is a health risk for infants of less than six months of age. High nitrate levels in drinking water can cause blue baby syndrome. Nitrate levels may rise quickly for short periods of time because of rainfall or agricultural activity. If you are caring for an infant you should ask advice from your health care provider.

<sup>4</sup> While your drinking water meets EPA's standard for trihalomethanes, it does contain low levels. Some people who drink water containing trihalomethanes in excess of the MCL over many years may experience problems with their liver, kidneys, or central nervous systems, and may have an increased risk of getting cancer.

<sup>5</sup>We have met all treatment technique requirements for Total Organic Carbon removal.

Contaminant	Violation Yes/No	Level Found	Range of Detections	Date of Sample	Unit Measurement	MRDLG	MRDL	Likely Source of Contamination
Chlorine	NO	1.7	.90-2.0	2023	ppm	4	4	Water additive used to control microbes.



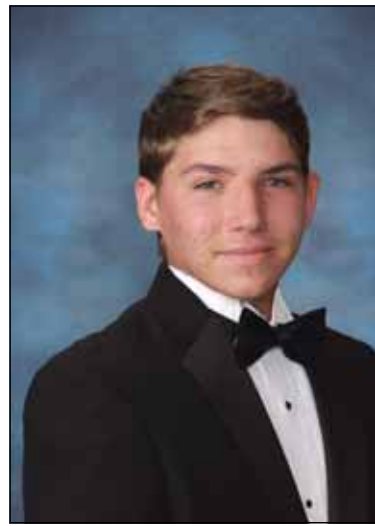
# Congratulations to the 2024 Class of St. Andrew's-Sewanee School



*Ethan Allen, Sewanee*



*Grayson Cleveland, South Pittsburg*



*Victor Dillon, Sewanee*



*Onawa Henson, Whitwell*



*Mary Ming Lynch, Sewanee*



*Lydia Andrews, Sewanee*



*Alex Colon, East Point, Ga.*



*Anja Dombrowski, Sewanee*



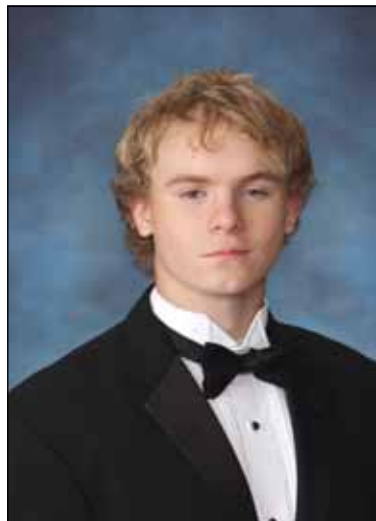
*Will Hernandez, Monteagle*



*Mariah Maxam, Sewanee*



*Raulston Barnett, Sewanee*



*Aidan Crabtree, Charleston, S.C.*



*Jackson Frazier, Sewanee*



*Ellie Jenkins, Sewanee*



*Abbott McDougal, Jasper*



*Elliott Benson, Sewanee*



*Cameron Crawford, Sewanee*



*Grey Givens, Jasper*



*Alex King, Nashville*



*Reese Michaels, Sewanee*



*Sarah Brewster, Sewanee*



*Drew DeLorme, Sewanee*



*Hadlee Hale, Manchester*



*Scott Kinnear, Lakewood, Colo.*



*Susanne Morrissey, Jasper*

*(Continued on page 10)*



## Summer Meal Program

The University of the South is participating in the Summer Food Service Program. Meals will be provided to all children without charge and are the same for all children regardless of race, color, national origin, sex, age, disability, and reprisal or retaliation for prior civil rights activity, and there will be no discrimination in the course of the meal service (not all prohibited bases apply to all programs). There will be no service on July 4 and July 5. Meals will be provided on a first-come, first-served basis at the sites and times as follows:

Altamont Public Library, Tuesdays, through July 26, from 10 a.m. to noon, at 1433 Main St., Altamont.

Beersheba Springs Public Library, Wednesdays, through July 26, from 11 a.m. to 1 p.m., at 19683 State Route 56, Beersheba Springs.

Coalmont Public Library, Thursdays, through July 26, from 2-4 p.m., at 6650 SR 56, Coalmont.

Cowan Community Center, Wednesdays, through July 26, from 2-4 p.m., at 303 Montgomery St., Cowan.

Franklin County Public Library, Wednesdays, through July 26, from 10 a.m. to noon, at 101 S. Porter St., Winchester.

Gruetli-Laager City Hall, Thursdays, through July 26, from 9:30-11:30 a.m., at 27730 SR TN-108, Gruetli-Laager.

Grundy County Food Bank, Tuesdays, through July 26, from 8:30-10:30 a.m., at 114 So Industrial Park Rd., Coalmont.

Grundy County Housing, Tuesdays, through July 26, from 9-11 a.m., at 187 Raulston Ave., Monteagle.

Grundy Safe Communities Coalition, Mondays, through July 26, from 8:30-10:30 a.m., at 14399 US

41, Tracy City.

May Justus Memorial Library, Thursdays, through July 26, from 10 a.m. to noon, at 24 Dixie Lee Ave., Monteagle.

Morton Memorial United Methodist Church, Saturdays, June 8 and July 13, from 8-10 a.m., at 322 W. Main St., Monteagle.

Palmer Public Library, Thursdays, through July 26, from 1-3 p.m., at 2115 Main St., Palmer.

Pelham UMC Mondays, through July 26, from 11:30 a.m. to 1:30 p.m., at 2440 TN 50, Pelham.

SETHRA, Monday, June 10, from 8-10 a.m., at 27 Phipps St., Coalmont.

Sherwood Community Center, Fridays, through July 26, from 10 a.m. to noon, at 10225 Sherwood Rd., Sherwood.

St. James Episcopal Church, Wednesdays, through July 26, from 10 a.m. to 1 p.m., at 898 Midway Rd., Sewanee.

University Child Care Center, Mondays, through July 26, from 7:30-9:30 a.m., at 574 Georgia Ave., Sewanee.

To file a program complaint alleging discrimination, complete the USDA Program Discrimination Complaint Form (AD-3027), found online at <[http://www.ascr.usda.gov/complaint\\_filing\\_cust.html](http://www.ascr.usda.gov/complaint_filing_cust.html)> and at any USDA office, or write a letter addressed to USDA and provide in the letter all of the information requested in the form. To request a copy of the complaint form, call (866) 632-9992. Submit your completed form or letter to USDA by: Mail: U.S. Department of Agriculture, Office of the Assistant Secretary for Civil Rights 1400 Independence Avenue, SW, Washington, D.C. 20250-9410. Fax: (202) 690-7442; or Email: <[Program.intake@usda.gov](mailto:Program.intake@usda.gov)>. This institution is an equal opportunity provider.

## Red, White, Blue – Thankful for You!

The Fourth of July Committee is proud to announce our theme for the 2024 celebration: “Red, White, Blue — Thankful for You!” The theme can encompass all things red, white, and blue — patriotism, flags, independence, giving thanks, and anything and everything in between. We are thankful for our community and your support to coordinate an outstanding event.

We invite everyone to join us on Wednesday, July 3, and Thursday, July 4, to commemorate the formation of the United States of America and celebrate with fun, food, family, and friends.

Start brainstorming your ideas for a celebration like no other with creative parade floats, imaginative cakes, and artistic costumes for you and your dogs. Visit our website <[sewanee4thofjuly.org](http://sewanee4thofjuly.org)> for more information announcing event registration, the grand marshal, and upcoming schedule details.

## Supper in the Park & Jammin’ Until Dark

Starting Friday, June 7, at 5 p.m., Altamont will be reopening Supper in the Park & Jammin’ Until Dark at the Gazebo in the old Courthouse Square on Cumberland Street.

Every Friday through August will feature a food truck for supper at 5 p.m.

At 6 p.m. any and all musicians are welcome to convene at the Gazebo to jam until dark.

It is a beautiful time with people enjoying good food, live music by local people who just love to pick and sing, and kids playing in the Rickey Son’s Memorial Jungle Gym.

After a hard work week treat yourself to supper out and live entertainment. If you play an instrument, just come on out, find a chair and play to your heart’s content.

## Class of 2024 (continued from page 9)



Sarah Grace Powell, Sewanee



Grant Shattuck, Monteagle



Charlie Relford, Estill Springs



Jack Shattuck, Monteagle



Madison Rogers, Jasper



Dimitri Sherrill, Manchester



Melanie Val, Tracy City

**Winchester Podiatry**  
**CHARLES D. GANIME, DPM**  
 Board Certified in Foot Surgery  
 Diplomate, American Board of Podiatric Surgery  
 New Patients of All Ages Welcome! We Treat Your Feet! Most Insurance Accepted, Including TennCare  
 155 Hospital Road Suite 1, Winchester.  
[www.winchesterpodiatry.com](http://www.winchesterpodiatry.com)  
**931-968-9191**

**MR. POSTMAN**  
 209 South Jefferson St., Winchester  
 One block off square across from PO  
 (931) 967-5777 Fax (931) 967-5719  
[mrspostwoman@gmail.com](mailto:mrspostwoman@gmail.com)  
**Color & B/W Copies**  
**—SHIPPING AND PACKING SERVICES—**  
 Open Mon-Fri 8:30-4:30 Authorized shippers for UPS and Fed Ex

**Cabinets Now In Stock!**  
 Straight from the manufacturer pricing with cabinet specialist on staff. Stop in today to pick out the cabinets of your dreams!  
 Free estimates!  
 1765 Decherd Blvd., Decherd, TN  
 (931) 967-0020  
 Mon-Fri 8 am-4:30 pm | Sat 8 am-noon | Closed Sun | [www.henleysupply.com](http://www.henleysupply.com)

**Find Your Sewanee Home.**  
 #LoveSewanee  
 Anne Chenoweth  
 REALTOR®  
 931.205.1299  
[anne.sewanee@gmail.com](mailto:anne.sewanee@gmail.com)  
 @anneonthemountain  
**PARKS** **P**  
 615.383.6964 • [parksathome.com](http://parksathome.com)

## Cowan Center for the Arts Poetry Night

On Friday, June 7, at 7:30 p.m., the Cowan Center for the Arts will be hosting its first monthly poetry reading, featuring Nashville poet Joshua Garcia and Lana Sain of Sewanee. Impromptu readings are welcome.

The event is free and open to the public. The Cowan Center for the Arts is the theater building at 301 Montgomery Street.



## Art Workshops at the Artisan Depot

Registration is open for workshops at the Artisan Depot. Please go to <<http://www.franklincoarts.org/workshop-details-923503.html>> for more information and to register.

Turn Paper into Fabric That Can be Stitched, 10 a.m. to noon, Saturday, June 15 — Class fee \$30. All materials will be supplied. You can bring a favorite picture printed on plain copy paper if you would like. Class must be paid in advance. Turn any picture into fabric from plain cheap copy paper. Once treated this can be stitched either with a machine or by hand. You can make a variety of things with this paper/fabric. Examples will be available. Class teacher is Pat Richards.

Make a Folded Paper Decorative Triangle Bag, 10 a.m. to noon, Saturday, July 13 — Class fee \$25. All materials supplied, but if you have a favorite pair of scissors or glue, you can bring it. Class fee must be paid in advance in order to hold your seat. Class size limited to 12. These charming, folding bags can be made from watercolor paper as pictured here, hand made paper, maps, any sturdy paper. They make any gift even more special. Class teacher is Margie Gallagher.

Handmade Leather Journals with Cut Spine, 10 a.m. to 1 p.m., Saturday, July 20 — Class fee \$65, Fee must be paid in advance in order to hold your seat. Class size is limited to 10. The \$25 materials fee to be paid to artist day of workshop. This fee is separate from class fee. Workshop participants will create a 5x7 inch leather journal. Spines are cut to reveal 10 colorfully wrapped signatures each containing 12 front only pages. A simple two needle sewing will complete the book. Class teacher is Nancy Wallace

Gel Plate One-of-a-kind Art, 10 a.m. to 2 p.m., Saturday, Aug. 17 — Class fee \$45, covers the class and the use of all materials. Class must be paid in advance. Class size is limited. Have you ever wanted to learn to use a gel plate to make one-of-a-kind piece of art? J. Denise Miller will be teaching how to use a gel plate to create unique art. Your completed gel prints can be used for a variety of purposes.

Registration and any class fee must be paid to have a seat in a class. If you have question you can contact the Artisan Depot at (931) 313-5686 or email <[franklincoarts@gmail.com](mailto:franklincoarts@gmail.com)>.

## FNIP Starts June 14

The Sewanee Business Alliance announces Friday Nights in the Park, a series of free, family-friendly summer concerts taking place in downtown Sewanee at Angel Park. The concerts will be from 6:30–8:30 p.m., Friday, June 14, June 21 and July 12.

University Avenue will be closed to traffic during the events, creating a pedestrian zone perfect for enjoying the music, mingling with friends and neighbors, and letting the kids run free. Food and drinks will be available for purchase from the local restaurants.

Save the date. Celebrate Independence Day with us at the annual July 3 Street Dance, at Angel Park, featuring the band Utopia.

## Shakerag Workshops - Evening Programs Open to the Public in June

Shakerag Workshops begins its 21th season of arts workshops for adults on the mountain this week. Taking place on the campus of St. Andrew's-Sewanee School, Shakerag welcomes artists from across the United States for in-person classes in a variety of arts media. The two Shakerag week-long sessions run June 9-15 and June 16-22.

Shakerag's week-long classes in June include natural dyeing, stitching, pottery, mixed-media painting, drawing, photography, mobile sculpture, sewing, video, quilting book arts, jewelry, rug hooking, and collaborative feltmaking and woodwork.

During the two week sessions, Shakerag Faculty offer short presentations in the evening at 7:15 p.m. in McCrory Hall, Monday through Thursday. Additionally, each Wednesday evening a reception to celebrate the Shakerag Faculty Exhibition follows the presentations in the St. Andrew's-Sewanee Gallery. The public is invited to both the presentations and the exhibition reception.

2024 Shakerag Faculty Presentations, 7:15 p.m. at McCrory Hall at St. Andrew's-Sewanee School

Evening Presentations: Session II  
Monday, June 10: Ruth Kneass, Mobile Sculpture; Andrew French, Photography

Tuesday, June 11: Bryan Hopkins, Porcelain Ceramics; Liv Aanrud, Rug Hooking; William Downs, Drawing

Wednesday, June 12: Kerry Madden-Lunford, Doug Baulos; Text and Image (Gallery Reception following)

Thursday, June 13: Paula Kovarik, Quilting; Jodi Hays; Collage/ Painting

Evening Presentations: Session III  
Monday, June 17: Lisa Klakulak, Feltmakig; Graeme Priddle, Woodworking

Tuesday, June 18: Anna Johnson, Jewelry; Laleh Mehran, Video

Wednesday, June 19: David McDonald, Pottery; Arounna Khounoraj, Stitching and Natural Dye (Gallery Reception following)

Thursday, June 20: Adrianna Aguirre, Sewing; Elspeth Schulze, Laser Cut Collage

Shakerag Workshops website <[www.shakerag.org](http://www.shakerag.org)> has more information about Shakerag classes, a more detailed description of the program. Though some classes are full, Shakerag Workshops is still accepting registrations for several classes this June. Local applicants receive a discount in tuition. For more information, contact Christi Teasley at (931) 636-0251 or email <[christi@shakerag.org](mailto:christi@shakerag.org)>.

## Three Lenses: A Photography Showcase

Frame Gallery is thrilled to present our inaugural group photography exhibition, "Three Lenses: A Photography Showcase" featuring the works of Kylene McDonald, Rick Boethe, and Sr. Madeline Mary. Each artist uniquely captures the essence of their surroundings, offering a glimpse into the beauty of their daily lives. The exhibition showcases stunning landscape vistas from St. Mary's Convent, St. Mary's Retreat Center, and the Monteagle Sunday School Assembly, alongside exquisite images of local flora and fauna including our beloved goats at the University Farm. Framed photos, prints and notecards will be available for sale. The opening reception is 5–6:30 p.m., Friday, June 7. All are welcome to attend. The exhibit will be on display through Tuesday, July 9. Frame Gallery hours are 10 a.m. to 5 p.m., Tuesday-Saturday.

## 'Playing with Knives: An Exploration of Color and Movement'

Join In-Town Gallery and Kathleen M. Pacenti in "Playing with Knives" at this month's Art After Hours at In-Town Gallery.

Pacenti's art is bold, energetic, and experimental. She likes to try new things. For this show, Kathleen chose to challenge herself in an interesting way. The result is a series of dazzling and joyous paintings. The exhibit is on display through June 30.

Kathleen's approach to "Playing with Knives" has a surprisingly mundane origin. "I don't like to throw away paint! I decided to experiment using palette knives and to use only paint left over from other projects. Constraints like that force me to be more creative and to stretch my approach." Her rules were, 1) use only paint left on her palette, 2) use only palette knives (no brushes!), and 3) the subject matter would be abstract or partly representational, whichever way the creative path led her.

Kathleen M. Pacenti, is a Chattanooga-based painter and mixed media artist, who comes from a graphic design background. She has taught art to both children and adults over the past eight years and is a founding member of Mixed Media Inspired Artists and Broad Stroke Artists. In addition to In-Town Gallery, Kathleen's work has been shown at WanderLinger Art Gallery, Erlanger Arts Gallery, Exum Gallery, North River Civics Center, and at Creative Arts Guild in Dalton, Ga.

Showcasing the creativity of local artists for 50 years, In-Town Gallery is located 'Between the Bridges' on Chattanooga's North Shore at 26A Frazier Ave. It is open 11 a.m. to 6 p.m., Monday–Saturday and noon to 5 p.m. on Sunday. Visit us at <[www.intowngallery.com](http://www.intowngallery.com)>, Facebook and Instagram.

## Cowan Poetry Library Branch

The Free Nashville Poetry Library is excited to announce its first outpost, the Cowan Poetry Library branch, located at the Cowan Community Center for the Arts, 301 Montgomery St., Cowan. The Free Poetry Library features classic, contemporary, and regional titles; anthologies, journals, small press publications, limited run chapbooks, and zines - every title available for checkout, for free, to anyone! 1.) Just stop by 2.) Select up to three titles 3. Fill) out the check-out form 4) bring them back in three weeks. The Community Center will be open on Saturdays from 10 a.m. to 5 p.m. You can also contact a librarian to make an appointment to visit the library: <[cowanpoetrylibrary@gmail.com](mailto:cowanpoetrylibrary@gmail.com)>.



**G. Robert Tubb II, Owner**  
931-967-3595  
A1ChimneySpecialist.com

CSIA Certified Technicians  
Video Inspections • Sweeping  
Restoration • Masonry Repair  
Custom Caps & Dampers  
Leak Repair & Water Proofing  
Wood Stove & Chimney Installs  
Gas Log Service & Installs  
Dryer Vent Cleaning/Repair







ROB MATLOCK  
CONSTRUCTION COMPANY  
NEW HOME BUILDING  
AND REMODELING

CELL: 931-580-5728  
EMAIL: [RMATLOCKCONSTR@GMAIL.COM](mailto:RMATLOCKCONSTR@GMAIL.COM)

# MATLOCK

State Licensed • Fully Insured

SERENITY ON THE FARM

"A HOME FOR THE AGED"

WE ARE OPEN!

**Licensed and insured 24 hour residential care for the elderly**

Services provided to our residents are, but are not limited to:

- personal care
- medication assistance (pharmacy services)
- laundry services
- house cleaning
- aquatic therapy
- meals prepared fresh daily
- transportation to medical appointment
- local nurse practitioners on call daily
- salon services
- daily activities (Family members welcome)
- weekly church services
- respite care
- hospice care (coming soon)

📞 423-403-4062 CELL 423-488-1847

✉️ [MICHELLE@SERENITYONTHEFARM.COM](mailto:MICHELLE@SERENITYONTHEFARM.COM)

✉️ [INFO@SERENITYONTHEFARM.COM](mailto:INFO@SERENITYONTHEFARM.COM)

📍 544 GILLIAMS COVE RD, SOUTH PITTSBURG TN 37380

CALL US FOR MORE DETAILS!





## Shop Local

Country Mart has so much to offer!!

Featuring:

- Mountain Top Meal Prep & Catering
- Compassionate Home Care & Community Services
  - NOVA by Sarah Sulfridge
  - Skull Chiropractic Clinic, PLLC
  - Fade at Monteagle
  - Monteagle Nutrition
  - Eco E-Bikes, LLC
  - High Vibes Healing

1045 W. Main St. Monteagle TN 37356



## Theron and Wicklund Finish as National Runner-Up in NCAA Doubles Championships

Jordan Theron and Quinn Wicklund won the first set in the finals of the NCAA Division III Men's Doubles Championships but dropped the next two to fall on May 28 to Tyler Haddorff and Gage Gohl of Gustavus Adolphus at the Dwight Davis Tennis Centre.

Theron and Wicklund defeated the Rensselaer Polytechnic Institute (RPI) doubles team earlier in the day, taking a 6-2, 6-4 win over Aiden Drover-Mattinen and Andy Zhu in the semifinals, before facing the Gustavus Adolphus team for the national championship.

Theron and Wicklund started the match strong as they broke the Gustavus Adolphus team at 15-40 to start up an early break. The Tigers held their serve at love for a 2-0 lead and lost just one point in the first two games. The Gusties held their serve, but the Tigers won the next three games for a 5-1 lead.

Gustavus Adolphus held off two set points on their serve to force Theron to serve for the set. Sewanee had two more set points before taking the deuce point for a 6-2 first set.

In the second set, the Gusties got out to a quick start; they encountered an early break for a 3-0 lead. Sewanee finally held for their first game of the set, but Gustavus took the next three for a 6-1 second set to force a deciding set.

In the third set, both teams held easily for a three all third set, the Tigers dropped just two points in their first three service games. However, with two double faults, Gustavus Adolphus picked up the only break in the final set for a 4-3 lead, before easily holding their serve to go up 5-3. Theron held his serve with no problem as the Tigers did not drop a point to force the Gusties to try and close the match out.

Theron started the returning game with a huge backhand return up the line, but Gohl responded with a huge service ace up for 15 all. Haddorff at the net, took advantage of the next return, poaching to take the next point. Wicklund had a huge return up the line on the next point for 30-all. However, the Gusties took the next two points to win the National Championship in the final set 6-4.

In the first match of the day, Sewanee won the first four games of the match. They kept their momentum, holding their serve and winning the first set 6-2.

In the second set, RPI and the Tigers exchanged breaks the first five games of the set before the Tigers held their service game at 40-15 for a 4-2 lead. Sewanee served for the match at 5-4 and did not drop a point to defeat RPI in the semifinals.

Theron and Wicklund ended a stellar season as they won the Fall ITA National Championship and are runners-up in the NCAA National Championship.

## St. Andrew's-Sewanee School Welcomes New Coach/Teacher

SAS is delighted to inform you of the appointment of Tim Wallace as the new head girls' varsity soccer coach at St. Andrew's-Sewanee School. With his extensive background in coaching and teaching, coupled with a genuine passion for the game, Coach Wallace is poised to make a significant impact on our soccer program.

Coach Wallace brings a wealth of experience from his tenure at esteemed institutions of Harpeth Hall School and The Ensworth School, where he served as a middle/high school teacher and coached at the varsity level. His dedication to the development of student-athletes both academically and athletically aligns perfectly with the values we hold dear at St. Andrew's-Sewanee School.

In addition to his coaching prowess, Coach Wallace's background in teaching English and history will undoubtedly enrich the lives of our student-athletes beyond the soccer field. His commitment to fostering a supportive and inclusive team environment reflects our school's ethos of nurturing well-rounded individuals who excel in all facets of life.

## Nick Davis Joins Women's Soccer Staff

Sewanee women's soccer coach Greg Cathell announced the hiring of Nick Davis as an assistant coach for the program, effective immediately.

Davis joins the Sewanee staff after working the past two years as the Technical Director of the Kickers Soccer Club and as an assistant coach for Wheaton College in Wheaton, Ill. He has also served as a goalkeeper and assistant coach for several academy and club teams.

"Nick brings a great balance of high-level collegiate coaching experience and the daily drive of the commitment and passion for recruiting that will aid in continuing to build upon an already strong roster," said Cathell. "I am confident that Nick will build the kind of lasting bonds with each of our players and prospective student-athletes that will continue to positively impact our program for years to come."

Davis enters his sixth year of coaching in the 2024-25 season, working at various levels of soccer throughout his career from club to collegiate. Through his experiences, he has created and implemented practice and developmental programs, coordinated travel, and trained and recruited high-level players.

He earned his bachelor's in Football (soccer) Coaching and Development from Plymouth Marjon University in Plymouth, England in 2022 and will complete his master's online in High-Performance Sports Coaching from Plymouth Marjon in the spring of 2025.

## ODAC, SAA Announce Football Crossover Scheduling Agreement for 2024

The Old Dominion Athletic Conference (ODAC) and the Southern Athletic Association (SAA) have announced a football scheduling agreement for the 2024 season. Week three of the Division III football calendar will now feature a series of crossover matchups between members from each conference.

"We are happy to partner with the SAA in this scheduling solution for the 2024 season," said ODAC Commissioner Brad Bankston. "By working together, we've been able to accommodate the teams available for competition in week three. I look forward to watching these matchups play out this fall."

The ODAC-SAA agreement provides solutions to different questions for each conference entering the 2024 campaign. The previously released ODAC schedule, which includes round-robin conference play for its eight football-sponsoring members, also featured a non-conference game in week three against another league member at the reverse location from their official ODAC matchup.

The SAA was left with vacancies in its conference framework following the announced closure of Birmingham Southern College. The league worked to realign its conference schedule to move all holes created by BSC's exit into week three, which allows for the institutions that opted into the ODAC-SAA pact to participate in the scheduling agreement.

"We are grateful to our partners at the ODAC for working together to find a positive solution that met both of our needs," said SAA Commissioner Stacey LaDew. "This 2024 football scheduling opportunity gives us a solution to a short-term issue and provides some marquee matchups on the gridiron across both leagues. I applaud our coaches and administrators for working together to find a positive solution to some unsavory issues."

The scheduling agreement includes the matchups posted below. Kickoff times will be determined at a later date.

Sewanee (SAA) at Guilford College (ODAC)

Centre College (SAA) at Hampden-Sydney College (ODAC)

Bridgewater College (ODAC) at Millsaps College (SAA)

Berry College (SAA) at Randolph-Macon College (ODAC)

Rhodes College (SAA) at Shenandoah University (ODAC)

Washington and Lee University (ODAC) at Trinity (Texas) University (SAA)

## Despriet and Petty Fall in the Quarterfinals of the NCAA Individual Championships

Brooke Despriet and Katherine Petty fell in a three set battle to Amherst University in the quarter finals of the NCAA Individual Doubles Championships.

Despriet and Petty fell in the first 5-7, but came back in the second set to force a deciding set with a 6-4 win.

In the final set, the Tigers saved a match point for a 5 all third set. Sewanee then broke for a 6-5 lead and had the chance to serve for the match. However, Amherst came back to force a tiebreaker at 6 all in the third set. The Tigers fell in the tiebreaker 2-7.

**HOUSE CALL SERVICE AVAILABLE**  
Full Service Veterinary Care for Dogs, Cats & Horses  
Offering Acupuncture, Chiropractic & Herbal Therapies

**Middtown Veterinary Services & Hospital**

Traci S. Helton DVM      Jessie Richardson DVM

Monday-Friday 7:30 am-6 pm  
**931-962-3411**

505 S. Jefferson St., Winchester (41-A toward Winchester. First left after Domino's Pizza)

**THE HORSE FARM**  
Sewanee, TN  
(423) 413-2401

Hands on Horses- Equine Facilitated Learning

Horses have been proven to have a therapeutic effect on participants of all ages and experiences.

Harness the transformative power of Equine interactions to enhance personal growth.

The impact of horses will improve:

- Self-esteem
- Self-regulation
- Trust
- Anxiety
- Focus
- Social skills
- Riding ability
- Mental health
- Emotional well-being
- Leadership

Individual and group sessions available!

**MYERS POINT**  
At Sewanee

MYERS POINT at Sewanee offers a rare opportunity to enjoy a private community that celebrates American architecture, lifestyle, protected forests, cultivated lakes and panoramic views on Middle Tennessee's Cumberland Plateau. If you want to live surrounded by nature, history, beauty, quality and serenity, you'll want to call it home.

John Goodson # (931) 703-0558  
myerspoint.com # jgoodson@myerspoint.com


— *Monteagle Florist* —

*Flowers are always a great way to brighten up someone's day!*

333 West Main Street, Monteagle  
(931) 924-3292  
Bonnie Nunley - Owner  
Daily deliveries to Sewanee for more than 40 years.

**WEAR WHITE AT NIGHT.**

Walkers and bikers should wear light, reflective clothing after dusk. Don't assume drivers can see you — be on the lookout for your own safety.





# SEWANEE SCHOOL OF LETTERS Summer Events

## Monday, June 3

Book signing with RYAN CHAPMAN and Director JUSTIN TAYLOR  
5:30 p.m., Sewanee Bookstore

## Wednesday, June 5

A faculty reading with MEERA SUBRAMANIAN  
and ADAM O'FALLON PRICE, 4:30 p.m., Naylor Auditorium

## Wednesday, June 12

Reading with author TRACY O'NEILL, 2024 John Grammer Fellow,  
4:30 p.m., Naylor Auditorium

## Wednesday, June 19

Faculty and alumni reading with NICKOLE BROWN  
and LINDSEY HARDING, L '11, 4:30 p.m., Naylor Auditorium  
Co-sponsored with the Friends of the Library

## Thursday, June 20

Reading with author JILL McCORKLE  
5:30 p.m., Sewanee Inn, Co-sponsored by Tower Community Bank

## Wednesday, June 26

Faculty reading with TIANA CLARK, RYAN CHAPMAN,  
and JAMIE QUATRO, 4:30 p.m., Naylor Auditorium

## Wednesday, July 3

Faculty reading with Director JUSTIN TAYLOR and EMILY ADRIAN  
4:30 p.m., Naylor Auditorium

## Wednesday, July 10

MFA candidate reading, 6 p.m., Shenanigans

Naylor Auditorium is located on the lower level of Gailor Hall

Sewanee  
School  
of Letters



## NATURENOTES

by Yolande Gottfried



Photo by Yolande Gottfried

### Scorpion

Our first scorpion has appeared rather later in the season than usual. We usually get a few in the spring — appearing almost anywhere — light fixtures, the sink, the dishwasher. Maybe the recent heavy rains brought this one out. This year it was just sitting in the middle of the carpet. They seem to do that—just sit, unless you try to catch them, perhaps due to their low metabolic rate. I had a newly acquired UV flashlight so I tried it out on the scorpion and sure enough, it fluoresced! See the photo in color online to get the full effect. The function of this fluorescence is still not fully understood. It has even been observed in fossils of scorpion ancestors. I'm not sure what it is about scorpions that always gives me the shivers. Evidently, the sting of the type we have is not worse than a wasp sting, for example. Maybe it is that they are arachnids and related to other creepy crawlies that most of us don't like, such as spiders and ticks. However, they have some fascinating characteristics. They can live for several years, up to 25 in captivity. They can survive a year without food. They give birth to live young, though a photo of a mother scorpion with her babies on her back still does not strike me as endearing. Appropriately, the constellation Scorpius will be rising in the south-southeast during this month, with the large orange star Antares, known as "the heart of the scorpion."

Now I plan to go out with my UV light at night and look for fluorescing lichens!



Rusty



Abbie

## MARC's Mountain Adoptables

### Meet Rusty & Abbie

Hi, my name is Rusty. I am probably a Lab/Hound mix, a gorgeous rust brindle color, around six months old, and weigh about 48 pounds. I am a shy but friendly fun-loving young boy ready to be part of a real and loving family. I can't wait to meet you and start learning good inside puppy manners and to go on fun adventures with you. My sister and I were living by ourselves and trying to find food and safe places to sleep when a nice couple found us and took us home with them. Now we have food and a safe place to sleep and two people and another dog who take care of us. But we can't stay here. So I am hoping you might like me and make me part of your family.

My name is Abbie. I might be a Hound/German Shepherd mix, am black, brown and white, am around one year old, and weigh about 45 pounds. I really would love to go on hikes and do lots of active fun stuff and to run as fast as the wind. There is so much to smell and to check out. I am learning to walk on a leash and I am house trained.

I get along with the other dogs at my foster home and hopefully I will like their cat too. I also ride nicely in the car. If you adopt me I know we could have lots of fun times together.

If you would like to learn more about Rusty and Abbie, please fill out an Adoption Application at this link <<https://form.jotform.com/240344297703052>> and/or contact Sue Scruggs, cell phone (423) 619-3845. These pets are fostering on the Sewanee-Monteagle Mountain and are easy to meet. All MARC animals ready for adoption are spayed or neutered and up-to-date on their vaccines and preventatives.

Marion Animal Resource Connection is a 501(c)(3) nonprofit animal welfare organization. It is not a shelter and relies on foster homes to save animals. MARC also provides low cost and free spay/neuter procedures for animals and is available for teaching humane care of animals in schools and to community organizations. Volunteers are needed.

## State Park Offerings

To confirm that these events will occur as listed go to <<https://tnstateparks.com/parks/events/south-cumberland>>, <<https://tnstateparks.com/parks/events/savage-gulf>> or call (931) 924-2980.

**Who, What, Where, Why? Animals All Around—South Cumberland State Park, Friday, June 7, 9:45 a.m. CDT. Free.** <<https://tnstateparks.com/parks/events/south-cumberland>>. (Registration closes at midnight the day before the event. Please pre-register.) Join Seasonal Interpretive Ranger Lydia Clark at the SCSP Visitors' Center, 11745 U.S. Hwy. 41, Monteagle, as she leads an educational program for children to learn about the native wildlife of the South Cumberland and how you can keep them safe.

**Stone Door Guided Hike—Savage Gulf State Park, Friday, June 7, 1:45 p.m. CDT. Free.** <<https://tnstateparks.com/parks/events/savage-gulf>>. (Registration closes at midnight the day before the event. Please pre-register.) Join Seasonal Ranger Joseph Harrison at Savage Gulf North Ranger Station, 550 Greeter Falls Rd., Altamont, for a guided 2-mile (round trip, approximate) mostly-moderate (special care needed on the stone stairs) hike to and from the Great Stone Door. Bring desired water and food, and wear sturdy shoes and weather-appropriate clothing. The areas around overlooks can be treacherous in terms of keeping your footing. The potential to slip and fall exists, and extreme care is needed. Attendee cancellations must be made no later than 24 hours prior to the program's scheduled start in order to receive a refund.

**New Moon Night Hiking at Stone Door—Savage Gulf State Park, Friday, June 7, 8:45 a.m. CDT. Cost, \$10.** <<https://tnstateparks.com/parks/eventssavage-gulf>>. (Registration closes at midnight the day before the event. Please pre-register.) Meet Park Ranger Spencer Baxter at Savage North (Stone Door) Ranger Station, 1183 Stone Door Rd., Beersheba Springs for a 2-mile (round trip, approximate) hike to the Stone Door and several other overlooks. Experience the beauty of the night sky. Bring your own headlamp, wear sturdy shoes and bring your spirit of adventure. Event is weather-dependent.

**Suter Falls Guided Hike—Savage Gulf State Park, Wednesday, June 12, 8:45 a.m. CDT. Free.** <<https://tnstateparks.com/parks/eventssavage-gulf>>. Registration closes at midnight the day before the event. Please pre-register.) Meet Seasonal Ranger Joe at Savage South Trailhead, 2689 55th Ave., Gruetli-Laager, for a 1-mile (round trip, approximate) strenuous hike with special care needed on approaching the falls. Wear appropriate footwear and bring water and snacks.

**What's Hidden in Our Streams?—South Cumberland State Park, Friday, June 14, 9:45 a.m. CDT. Free.** <<https://tnstateparks.com/parks/events/south-cumberland>>. (Registration closes at midnight the day before the event. Please pre-register.) Join Seasonal Interpretive Ranger Lydia Clark at Fiery Gizzard South Trailhead, 498 Foster Falls Rd., Tracy City, for a hike down to and into the stream, to capture and identify critters living in the streambed. The hike down is short but steep. Bring shoes you don't mind getting wet. Bring water and snacks.

## WEATHER

DAY	DATE	HI	LO	Week's Stats:
Mon	May 27	82	60	Avg max temp = 77
Tue	May 28	80	60	Avg min temp = 57
Wed	May 29	80	56	Avg temp = 68
Thu	May 30	78	54	Precipitation = 1.72"
Fri	May 31	79	57	
Sat	June 01	76	57	
Sun	June 02	65	63	

Reported by Sandy Gilliam  
Domain Ranger

**WOODY'S BICYCLES**  
SALES, SERVICE AND RENTALS  
A Full-Service Trek Bicycle Dealer

Tues - Fri 9-5 | Sat 10-2 | 90 Reed's Lane  
598-9793 | woodybike@gmail.com

Check out [www.woodysbicycles.com](http://www.woodysbicycles.com) for rates, trail maps, photos, bike club links, races and much more!

## BUG PROBLEMS?

We can help! Call us for a free inspection!  
**BURL'S TERMITE & PEST CO.**  
TERMITE—PEST—VAPOR CONTROL  
Bonded • Insured • Home-Owned & Operated  
101 N. Main Street, Estill Springs  
(931) 967-4547 or [www.BurlsTermite.com](http://www.BurlsTermite.com)  
Charter #3824 • License #17759

## Russell L. Leonard

ATTORNEY AT LAW

Office: (931) 924-0447  
Fax: (931) 924-1816  
1016 W. Main St., Suite 3  
Monteagle, TN 37356  
[rleonardlegal@gmail.com](mailto:rleonardlegal@gmail.com)  
[www.rleonardlegal.com](http://www.rleonardlegal.com)

The Sewanee Institution since 1974

**Shenanigans RESTAURANT**

PUB & GRILL / PIZZA / DELI / CATERING  
CALL FOR TAKE-OUT OR DELIVERY  
931-598-5774

OPEN EVERY DAY 11 a.m. to 11:30 p.m. (later on weekends!)

12595 Sollace M Freeman Hwy, Sewanee, TN  
(on the corner of University Ave and 41A)

FIND YOUR HAPPY PLACE...AT SHENANIGANS

Michael A. Barry  
**LAND SURVEYING & FORESTRY**

\* ALL TYPES OF LAND SURVEYS  
\* FORESTRY CONSULTING

(931) 598-0314 | (931) 308-2512



# Messenger Classifieds

## ENGINE REPAIR

**SMALL ENGINE REPAIRS:** Sargent's Small Engines. By appointment only. (423) 322-7639 or (931) 212-2585.

## FOR SALE

**FIREWOOD FOR SALE:** Semi-seasoned wood available for 2024/2025 seasons. Stock up for next year. \$125 delivered, stacked. Fire-pit wood: contains pine, poplar, etc. \$100/pickup load delivered. (423) 322-7639 or (931) 212-2585.

**FOR SALE:** Beautiful 42" round iron table. Glass top w/4 arm chairs. \$325. (931) 598-0224.

## FOR SALE OR FOR RENT:

Family Retreat, Cowan, Tenn., area: 3 tiny houses, very private mountain setting, 15 minutes from The University of The South. Features: spa, hot tub, hiking trail, fire pit, grill area. Sleeps six+. Each unit is unique and rents for \$206/night. (Minimum 3 Nights). Experience Gatlinburg Right Here At Home. Perfect Weekend Get Away. Points of contact: Joshua, (931) 636-3356; Donnie, (931) 308-9150.

## LAWN CARE

### CHAD'S LAWN & LANDSCAPING

-FREE ESTIMATES-

\* Lawn care & Design (Mulch & Planting)  
ALSO: \* Tree Trimming & Removal  
\* Pressure Washing \* Road Grading  
\* Stone Patio/Fireplace \* Garden Tilling  
\* Leaf Pickup & Blowing  
(931) 308-5059

### EAGLE LANDSCAPING & LAWN MAINTENANCE CO.

Now Offering Specials for the SUMMER!  
We offer lawn maintenance, landscaping, hedge/tree trimming & more!  
Please call for your free estimate  
(931) 598-0761 or (931) 636-0383

### LONG'S LAWN SERVICE

• landscaping & lawn care  
• leaf removal • mulch  
Local references available.  
Jayson Long  
(931) 924-LAWN (5296)

**SUPREME GRASS CUTTING AND MORE:** We will beat ANY competitor. Call any time. (931) 308-9150.

## LOCAL SERVICES

**MARK'S HOME REPAIR**  
KITCHEN AND BATH REMODELING  
Decks, Home Building, Electrical,  
Plumbing, Drywall, Tile & Hardwood Floors,  
Outbuildings, Pressure Washing  
**MARK GREEN, owner**  
931-636-4555 | mdgreen41@gmail.com

**Lakeside Collision**  
"Done Right, the First Time"  
103 Mabee Ave., Monteagle  
Ph: 931.924.3316 | Cell: 931.235.3316  
lakesidecollision00@gmail.com

**MASSAGE**  
**Regina Rourk Childress**  
Licensed Massage Therapist  
[www.reginarourk.com](http://www.reginarourk.com)  
- GIFT CERTIFICATES -  
(931) 636-4806

**GARMENT HEMMING:** And other alterations. Call (931) 691-4629.

**King's Tree Service**  
Topping, trimming, bluff/lot clearing, stump grinding and more!  
\*Bucket truck or climbing\*  
Free wood chips with job  
Will beat any quoted price!  
Satisfaction guaranteed!!  
-Fully licensed and insured-  
kingstreeservice.com  
Call (931) 598-9004—Isaac King

**MONTEAGLE SECURITY OPERATIONS**  
CCTV, BURGLAR & FIRE ALARMS  
931-924-3216 800-764-7489  
monsecurity.com TN license 1912

## PUBLIC NOTICE

**NOTICE:** The Sewanee Utility District of Franklin and Marion Counties Board of Commissioners is scheduled to meet at 5 p.m., Tuesday, June 18, at the utility office on Sherwood Road. If a customer is unable to attend but wishes to bring a matter to the board, call (931) 598-5611, visit the office, or call a board member. The board members are Doug Cameron, Johnny Hughes, Donnie McBee, Charlie Smith, and Clay Yeatman.

SH ♥ P  
LOCAL

## PUBLIC NOTICE

**NOTICE OF SPECIAL CALLED WORKSHOP**  
NOTICE IS HEREBY GIVEN OF A SPECIAL CALLED WORKSHOP OF THE MONTEAGLE PLANNING COMMISSION TO BE HELD ON TUESDAY, JULY 2, 2024, AT 3:00PM (CENTRAL) IN THE MONTEAGLE TOWN HALL. THE PURPOSE OF THIS SPECIAL CALLED WORKSHOP IS TO GO OVER THE AGENDA FOR THE SUBSEQUENT PLANNING COMMISSION MEETING AND OTHER ZONING ORDINANCE ITEMS. GREG MALOOF, MONTEAGLE MAYOR



## Local 12-Step Meetings

**Friday**  
7 p.m., AA, open, Christ Church, Tracy City  
**Saturday**  
7 p.m., NA, open, Decherd United Methodist  
**Sunday**  
6:30 p.m., the Wesley House, MMUMC  
**Monday**  
5 p.m., 12-Step Women's Study Group. Call (931) 327-5551 for information and for the Zoom link  
7 p.m., AA, open, Christ Church, Tracy City  
**Tuesday**  
7 p.m., AA, open, First Baptist, Altamont  
7 p.m., AA, open, Trinity Episcopal Church, Winchester  
**Wednesday**  
10 a.m., AA, closed, Cliff-tops, (931) 924-3493  
7 p.m., NA, Decherd United Methodist  
**Thursday**  
6 p.m., Life's Healing Choice, Grundy County Recovery Alliance, Coal-mont  
7 p.m., Al-Anon, First UMC, Winchester

## DONATIONS NEEDED 4 MARC

Purina One dog food • Purina One puppy food  
Tough dog toys



**DONATIONS DROPPED OFF @**  
MARC, 225 Sequatchie Ln., Sequatchie, TN  
Taylor's Mercantile, 10 University Ave., Sewanee, on Thursday and Friday before noon  
SCAN the Amazon Wish List <https://a.co/7119w5J>  
VOLUNTEERS ARE NEEDED!



We're glad you're reading the Messenger.



## SHARE the TRAIL

### Rule #3

Be safe.  
Yield to cars at all road crossings.

WALK • RUN • CYCLE  
TOGETHER

[mountaingoattrail.org](http://mountaingoattrail.org)

## Folks want to know your business!

Reasonable rates. Loyal readership.



Reach more people with your advertisement.  
call: (931) 598-9949  
email: [ads@sewaneemessenger.com](mailto:ads@sewaneemessenger.com)  
view: [www.sewaneemessenger.com](http://www.sewaneemessenger.com)

## RECYCLING - DROPOFF CENTER

S M T W Th F S  
□ X X X X X X



Convenience Center - Sewanee  
132 Missouri Avenue  
931.598.5085

Your Franklin County taxes support this center. Items collected include common household trash along with the following materials:

- ALUMINUM
- CARDBOARD
- METAL
- MIXED PAPER
- PLASTIC
- WASTE OIL/ANTIFREEZE

## HOURS of OPERATION

	WHEN Daylight Savings BEGINS	WHEN Daylight Savings ENDS
MON	1:00 - 6:00	12:00 - 5:00
TUE	3:00 - 6:00	2:00 - 5:00
WED	3:00 - 6:00	2:00 - 5:00
THU	3:00 - 6:00	2:00 - 5:00
FRI	3:00 - 6:00	2:00 - 5:00
SAT	8:00 - 4:00	8:00 - 4:00
SUN	CLOSED	CLOSED

**988**  
**SUICIDE & CRISIS LIFELINE**



# FROM BARD TO VERSE

by Robin Bates

## Truth and Justice

Human reason is beautiful and invincible.  
 No bars, no barbed wire, no pulping of books,  
 No sentence of banishment can prevail against it.  
 It establishes the universal ideas in language,  
 And guides our hand so we write Truth and Justice  
 With capital letters, lie and oppression with small.  
 It puts what should be above things as they are,  
 Is an enemy of despair and a friend of hope.  
 It does not know Jew from Greek or slave from master,  
 Giving us the estate of the world to manage.  
 It saves austere and transparent phrases  
 From the filthy discord of tortured words.  
 It says that everything is new under the sun,  
 Opens the congealed fist of the past.  
 Beautiful and very young are Philo-Sophia  
 And poetry, her ally in the service of the good.  
 As late as yesterday Nature celebrated their birth,  
 The news was brought to the mountains by a unicorn and an echo.  
 Their friendship will be glorious, their time has no limit.  
 Their enemies have delivered themselves to destruction.

--Czeslaw Milosz, *Incantation*

## SPREAD GOOD NEWS.

Help friends get information. Help local businesses succeed.  
 Help our Mountain communities.

## St. Mary's Sewanee Sponsored Programs

**Tending Our Souls, Women's Writing Retreat**  
 June 27th-30th  
 waiting list only

**Sound Healing Workshop**  
 July 13th

**Weekend Centering Prayer**  
 August 2nd-4th

**One River Wisdom**  
 August 23rd-25th

Package pricing varies.  
 Visit the website for more information.

*Rest Renew Reconnect* For more information or to register, go to [www.stmaryssewanee.org](http://www.stmaryssewanee.org)



### NEW BEGINNER PILATES CLASSES

**A new Beginning Pilates** with Kim Butters starts June 4, 2024 at 10 am on TTH or June 10 at 5:30 pm on Mondays. The class will educate you about the fundamentals of healthy Pilates movement that aligns, protects your bones and joints and improves the balance, as well as giving you a workout. This class is appropriate for brand new beginners as well as those who have some experience and need to renew or enhance their skills.

**Intermediate Pilates** classes are 9 am MW & 5:30 pm M  
**Easy Flow Yoga** with Pippa Browne on Tuesdays at 5:30 pm starting June 4. This class is appropriate for all levels.

**You Fit cardio/strength class** with Betsy Miller meets Fridays at 10 am and noon, Sundays at 1:30 and 2:30. You Fit meets at the Community Center. Sign-up Required.

**Private/duet/trio sessions** using the unique Pilates equipment are available by appointment M-F with Kim Butters

**Personal Training and PNF stretching sessions** with Hannah Van Buren are available by appointment MW TH and Friday

**Matthew Sias**, LMT offers amazing massage sessions of 60 or 90 minutes. Matthew specializes in Deep Tissue • Sports Massage • Swedish Massage Myofascial Release • Stretching • Range-of-Motion. Add CBD or hot stones to any massage. Contact him at 615-397-8348 to schedule.

Check our website, [www.bodyworksyouniversity.com](http://www.bodyworksyouniversity.com) or call/text 423-322-1443 for more information on our full offerings and prices.

# Community Calendar

## Friday, June 7

- 9 a.m. CAC office open, until 11 a.m.
- 9 a.m. Hike to Piney Point with Professor Bran Potter, meet at gravel parking lot by University gates on 41A
- 9 a.m. Yin Yoga, Anneli, High Vibes, Country Mart, Monteagle, until 10:15 a.m.
- 10 a.m. Summer Meal Program, 10225 Sherwood Rd., Sherwood, until noon
- 10 a.m. You Fit, Betsy, Community Center; and at noon; sign up required
- 11 a.m. Lecture, "Whoever Wants to Know the Heart & Mind of America Had Better Learn Baseball", Dr. John McCardell Jr., Convocation Hall, come early for coffee
- 5 p.m. Opening Reception, "Three Lenses Photography Showcase," Frame Gallery, until 6:30 p.m.
- 5 p.m. Supper in the Park, Jammin' Until Dark, Gazebo, Courthouse Square, Altamont
- 7:30 p.m. Outside Inn Reunion, Cravens Hall, \$5
- 7:30 p.m. Cowan Center for the Arts Premier Poetry Night, 301 Montgomery St.

## Saturday, June 8

- 8 a.m. MMUMC monthly curbside food distribution, 322 W. Main St., Monteagle, until 10 a.m.; also Summer Meal Program
- 8 a.m. Sewanee Gardeners' Market, Hawkins Lane, until 10 a.m.
- 9 a.m. American Legion Post 51, Legion Hall
- 9 a.m. Morning hike to Piney Point, Potter
- 9:30 a.m. Vinyasa Flow, Anneli, High Vibes, Country Mart, Monteagle, until 10:45 a.m.
- 10 a.m. Hospitality Shop open, until 2 p.m.
- 10 a.m. SCCF Grant Orientation Session, Kennerly Hall, St. Mark & St. Paul
- 11 a.m. McCardell Lecture, Convocation Hall
- 11:30 a.m. SCCF Celebration of the Plateau, Kennerly Hall, St. Mark & St. Paul
- 2 p.m. Farm Olympics (\$30/adults, \$15/children), Cove Creek Farm, Monteagle
- 7:30 p.m. Outside Inn Reunion, Cravens Hall, \$5

## Sunday, June 9 • 142nd MSSA Season Begins

- 1:30 p.m. You Fit, Betsy, Community Center; also at 2:30 p.m.; sign up required
- 2 p.m. Knitting Circle, Mooney's, until 4 p.m.
- 4 p.m. Hatha Yoga, Helen, Community Center

## Monday, June 10

- 7:30 a.m. Summer Meal Program, University Child Care Center, 574 Georgia Ave., Sewanee, until 9:30 a.m.
- 8 a.m. Summer Meal Program, SETHRA, 27 Phipps St., Tracy City, until 10 a.m.
- 8:30 a.m. Summer Meal Program, Grundy Safe Communities Coalition, 14399 US 41, Tracy City until 10:30 a.m.
- 9 a.m. CAC Office open, until 11 a.m.
- 9 a.m. Pilates, intermediate, Kim, 293 Ball Park Rd.
- 9 a.m. Tai Chi, Shao-nian, High Vibes, Country Mart, Monteagle, until 10 a.m.
- 10:30 a.m. Chair Exercise, Ruth, Community Center, until 11:45 a.m.
- 11:30 a.m. Summer Meal Program, Pelham UMC, 2440 TN 50, until 1:30 p.m.
- 2:30 p.m. UT Extension Small Business Workshop, old Coalmont School cafeteria, 7852 TN 56, Coalmont
- 4 p.m. Monteagle City Council workshop, Conference room, City Hall
- 5:30 p.m. Hatha Flow, Anneli, High Vibes, Country Mart, Monteagle, until 6:45 p.m.
- 5:30 p.m. Pilates, beginner/intermediate, Kim, 293 Ball Park Rd.
- 6 p.m. Franklin County School Board, 215 S. College St., Winchester
- 6:30 p.m. MSSA Performance, Black Hymnody, W. Crimm Singers, Auditorium

## Tuesday, June 11

- 8 a.m. GC Food Bank, 114 S. Industrial Park Rd., Coalmont, until 10 a.m.
- 8:30 a.m. Summer Meal Program, 114 S. Industrial Park Rd., Coalmont, until 10:30 a.m.
- 9 a.m. Summer Meal Program, 187 Raulston Ave., Monteagle, until 11 a.m.
- 9 a.m. CAC office open, until 11 a.m.
- 9 a.m. Mixed Flow, Anneli, High Vibes, Country Mart, Monteagle, until 10:15 a.m.
- 10 a.m. Hospitality Shop open, until 1 p.m.
- 10 a.m. Pilates, beginners, Kim, 293 Ball Park Rd.

- 10 a.m. Summer Meal Program, 1433 Main St., Altamont, until noon
- 10:30 a.m. La Leche League, 39 Ball Park Rd.
- 10:45 a.m. MSSA Lecture: "History of Women's Education," Newbold Richardson, Warren Chapel
- 11:30 a.m. Grundy County Rotary, Dutch Maid Bakery, Tracy City
- noon Pilates, intermediate, Kim, 293 Ball Park Rd.
- 4 p.m. S. Cumberland Farmers' Market pickup, Community Center, until 6 p.m.
- 5 p.m. GriefShare support group/weekly seminar, MMUMC Wesley House
- 5:30 p.m. Easy Flow Yoga, Pippa, 293 Ball Park Rd.
- 5:30 p.m. Pilates Mat Class, Bruce, High Vibes, Country Mart, Monteagle, until 6:30 p.m.

## Wednesday, June 12

- 9 a.m. CAC office open, until 11 a.m.
- 9 a.m. Monteagle City Council special called meeting of Mayor and Aldermen, Conference room, City Hall
- 9 a.m. Pilates, intermediate, Kim, 293 Ball Park Rd.
- 9 a.m. Tai Chi, Shao-nian, High Vibes, Country Mart, Monteagle, until 10 a.m.
- 10 a.m. Summer Meal Program, 101 S. Porter St., Winchester, until noon
- 10 a.m. Summer Meal Program, May Justus Memorial Library, 24 Dixie Lee Ave., Monteagle, until noon
- 10:30 a.m. Chair Exercise, Ruth, Community Center, until 11:45 a.m.
- 10:45 a.m. MSSA Plateau Talk: Sustainable Farming at Cove Creek Farm, Sparacio, Warren Chapel; tour of farm at 1 p.m. (meet at Auditorium)
- 11 a.m. Summer Meal Program, 19683 SR 56, Beersheba Springs, until 1 p.m.
- 11 a.m. Summer Meal Program, St. James, 898 Midway Rd., Sewanee, until 1 p.m.
- 2 p.m. Summer Meal Program, 303 Montgomery St., Cowan, until 4 p.m.
- 4:30 p.m. School of Letters reading, Tracy O'Neill, Naylor Auditorium, Gailor Hall
- 5 p.m. Mobility+Flexibility, Camp, High Vibes, Country Mart, Monteagle, until 6 p.m.
- 5:30 p.m. Hatha Yoga, Helen, Community Center
- 5:30 p.m. Pilates, intermediate, Kim, 293 Ball Park Rd.
- 6:30 p.m. Kundalini Yoga, Pippa, High Vibes, Country Mart
- 7 p.m. Matis Lecture, Convocation Hall

## Thursday, June 13

- 8 a.m. Monteagle-Sewanee Rotary, St. Mary's Sewanee
- 9 a.m. CAC office open, until 11 a.m.
- 9 a.m. Wild Card, Anneli, High Vibes, Country Mart, Monteagle, until 10:15 a.m.
- 9:30 a.m. Summer Meal Program, 27730 SR TN-108, Gruetli-Laager, until 11:30 a.m.
- 10 a.m. Hospitality Shop open, until 1 p.m.
- 10 a.m. Pilates, beginner, Kim, 293 Ball Park Rd.
- 10 a.m. Summer Meal Program, 24 Dixie Lee Ave., Monteagle, until noon
- 10:45 a.m. MSSA Lecture: "Finding the God in All Things," Gail Pitt, Warren Chapel
- noon Pilates, intermediate, Kim, 293 Ball Park Rd.
- 1 p.m. Summer Meal Program, 2115 Main St., Palmer, until 3 p.m.
- 2 p.m. Summer Meal Program, 6650 SR 56, Coalmont, until 4 p.m.
- 5:30 p.m. Pilates Mat Class, Bruce Manuel, High Vibes, Country Mart, Monteagle
- 7:45 p.m. MSSA Performance, A Night with Teddy Roosevelt, Joe Wiegand, Auditorium

## Friday, June 14 • Flag Day

- 9 a.m. CAC office open, until 11 a.m.
- 9 a.m. Yin Yoga, Anneli, High Vibes, Country Mart, Monteagle, until 10:15 a.m.
- 10 a.m. Summer Meal Program, 10225 Sherwood Rd., Sherwood, until noon
- 10 a.m. You Fit, Betsy, Community Center; and at noon; sign up required
- 10:45 a.m. MSSA Lecture: "What is Quiet Luxury 2.0?" Tina Adams, Warren Chapel
- 5 p.m. Cowan Flag Day Ceremony
- 6:30 p.m. FNIP, Angel Park, until 8:30 p.m.

**Sewanee DOOR-TO-DOOR**  
 TRANSPORTATION SERVICE  
 Nashville • Chattanooga • Huntsville  
 Local trips available, too. Policies available online.

Book now by phone or online:  
**423.394.0725**  
[sewaneedoor-to-door.com](http://sewaneedoor-to-door.com)

Cash App  
 PayPal  
 Zelle  
 venmo

**Local 12-Steps Meetings on page 15 of this issue**